

YTHDC1 Rabbit pAb

Catalog No.: A7318 **2 Publications**

Basic Information

Observed MW

110kDa

Calculated MW

85kDa

Category

Primary antibody

Applications

WB, ELISA

Cross-Reactivity

Human, Mouse, Rat

Background

Enables N6-methyladenosine-containing RNA binding activity. Involved in mRNA export from nucleus; mRNA splice site selection; and regulation of gene expression. Located in nuclear speck and plasma membrane.

Recommended Dilutions

WB 1:1000 - 1:5000

ELISA Recommended starting concentration is 1 µg/mL. Please optimize the concentration based on your specific assay requirements.

Immunogen Information

Gene ID

91746

Swiss Prot

Q96MU7

Immunogen

Recombinant protein (or fragment). This information is considered to be commercially sensitive.

Synonyms

YT521; YT521-B; YTHDC1

Contact

 | 400-999-6126

 | cn.market@abclonal.com.cn

 | www.abclonal.com.cn

Product Information

Source

Rabbit

Isotype

IgG

Purification

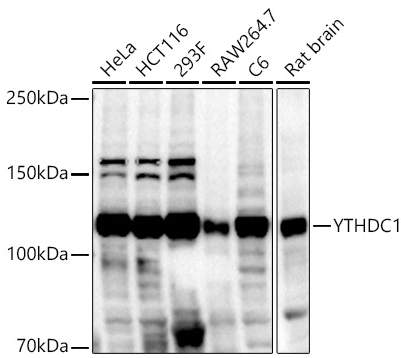
Affinity purification

Storage

Store at -20°C. Avoid freeze / thaw cycles.

Buffer: PBS containing 50% glycerol, preserved with proclin300 or sodium azide (as specified on the Certificate of Analysis), pH 7.3.

Validation Data



Western blot analysis of various lysates using YTHDC1 Rabbit pAb (A7318) at 1:2000 dilution.
Secondary antibody: HRP-conjugated Goat anti-Rabbit IgG (H+L) (AS014) at 1:10000 dilution.
Lysates/proteins: 25µg per lane.
Blocking buffer: 3% nonfat dry milk in TBST.
Detection: ECL Basic Kit (RM00020).
Exposure time: 10s.