

TMLHE Rabbit pAb

Catalog No.: A7312

Basic Information

Observed MW

Calculated MW

50kDa

Category

Primary antibody

Applications

IF/ICC,ELISA

Cross-Reactivity

Human

Background

This gene encodes the protein trimethyllysine dioxygenase which is the first enzyme in the carnitine biosynthesis pathway. Carnitine play an essential role in the transport of activated fatty acids across the inner mitochondrial membrane. The encoded protein converts trimethyllysine into hydroxytrimethyllysine. A pseudogene of this gene is found on chromosome X. Alternate splicing results in multiple transcript variants.

Recommended Dilutions

IF/ICC 1:50 - 1:100

ELISA Recommended starting concentration is 1 µg/mL. Please optimize the concentration based on your specific assay requirements.

Immunogen Information

Gene ID

55217

Swiss Prot

Q9NVH6

Immunogen

Recombinant protein (or fragment). This information is considered to be commercially sensitive.

Synonyms

TMLD; TMLH; BBOX2; AUTSX6; TMLHED; XAP130; TMLHE

Contact

☎ | 400-999-6126

✉ | cn.market@abclonal.com.cn

🌐 | www.abclonal.com.cn

Product Information

Source

Rabbit

Isotype

IgG

Purification

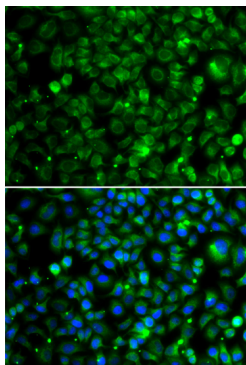
Affinity purification

Storage

Store at -20°C. Avoid freeze / thaw cycles.

Buffer: PBS with 0.02% sodium azide, 50% glycerol, pH7.3.

Validation Data



Immunofluorescence analysis of MCF-7 cells using TMLHE Rabbit pAb (A7312). Secondary antibody: Cy3-conjugated Goat anti-Rabbit IgG (H+L) (AS007) at 1:500 dilution. Blue: DAPI for nuclear staining.