

ATG5 Rabbit pAb

Catalog No.: A7252 **2 Publications**

Basic Information

Observed MW

54kDa

Calculated MW

32kDa

Category

Primary antibody

Applications

WB,IF/ICC

Cross-Reactivity

Human, Mouse

Background

The protein encoded by this gene, in combination with autophagy protein 12, functions as an E1-like activating enzyme in a ubiquitin-like conjugating system. The encoded protein is involved in several cellular processes, including autophagic vesicle formation, mitochondrial quality control after oxidative damage, negative regulation of the innate antiviral immune response, lymphocyte development and proliferation, MHC II antigen presentation, adipocyte differentiation, and apoptosis. Several transcript variants encoding different protein isoforms have been found for this gene.

Recommended Dilutions

WB 1:500 - 1:2000

IF/ICC 1:10 - 1:100

Immunogen Information

Gene ID

9474

Swiss Prot

Q9H1Y0

Immunogen

Synthetic peptide. This information is considered to be commercially sensitive.

Synonyms

ASP; APG5; APG5L; hAPG5; SCAR25; APG5-LIKE; ATG5

Contact

 | 400-999-6126 | cn.market@abclonal.com.cn | www.abclonal.com.cn

Product Information

Source

Rabbit

Isotype

IgG

Purification

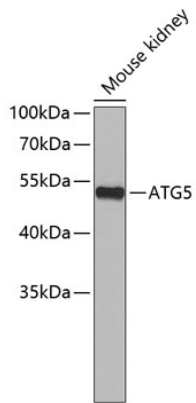
Affinity purification

Storage

Store at 4°C. Avoid freeze / thaw cycles.

Buffer: PBS with 0.02% sodium azide,pH7.3.

Validation Data



Western blot analysis of lysates from mouse kidney, using ATG5 Rabbit pAb (A7252).
Secondary antibody: HRP-conjugated Goat anti-Rabbit IgG (H+L) (AS014) at 1:10000 dilution.
Lysates/proteins: 25 μ g per lane.
Blocking buffer: 3% nonfat dry milk in TBST.