

# CSRNP1 Rabbit pAb

Catalog No.: A7130 **1 Publications**

## Basic Information

### Observed MW

64kDa

### Calculated MW

64kDa

### Category

Primary antibody

### Applications

WB,IHC-P,IF/ICC,ELISA

### Cross-Reactivity

Human, Mouse, Rat

## Background

This gene encodes a protein that localizes to the nucleus and expression of this gene is induced in response to elevated levels of axin. The Wnt signalling pathway, which is negatively regulated by axin, is important in axis formation in early development and impaired regulation of this signalling pathway is often involved in tumors. A decreased level of expression of this gene in tumors compared to the level of expression in their corresponding normal tissues suggests that this gene product has a tumor suppressor function. Alternative splicing results in multiple transcript variants.

## Recommended Dilutions

**WB** 1:500 - 1:2000

**IHC-P** 1:50 - 1:200

**IF/ICC** 1:50 - 1:100

**ELISA** Recommended starting concentration is 1 µg/mL. Please optimize the concentration based on your specific assay requirements.

## Immunogen Information

### Gene ID

64651

### Swiss Prot

Q96S65

### Immunogen

Recombinant protein (or fragment). This information is considered to be commercially sensitive.

### Synonyms

AXUD1; URAX1; TAIP-3; CSRNP-1; FAM130B; CSRNP1

## Contact

☎ | 400-999-6126

✉ | [cn.market@abclonal.com.cn](mailto:cn.market@abclonal.com.cn)

🌐 | [www.abclonal.com.cn](http://www.abclonal.com.cn)

## Product Information

### Source

Rabbit

### Isotype

IgG

### Purification

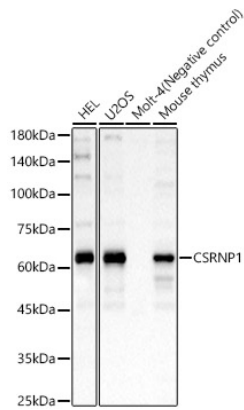
Affinity purification

### Storage

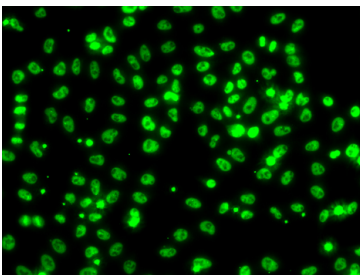
Store at -20°C. Avoid freeze / thaw cycles.

Buffer: PBS containing 50% glycerol, preserved with proclin300 or sodium azide (as specified on the Certificate of Analysis), pH 7.3.

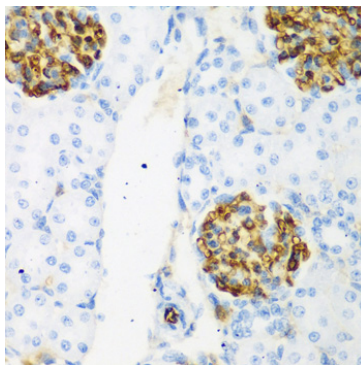
## Validation Data



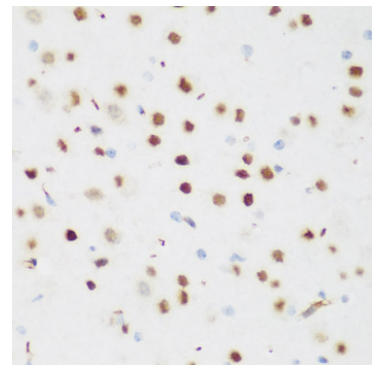
Western blot analysis of various lysates, using CSRNP1 Rabbit pAb (A7130) at 1:500 dilution. Secondary antibody: HRP-conjugated Goat anti-Rabbit IgG (H+L) (AS014) at 1:10000 dilution. Lysates/proteins: 25µg per lane. Blocking buffer: 3% nonfat dry milk in TBST. Detection: ECL Basic Kit (RM00020). Exposure time: 10s.



Immunofluorescence analysis of A549 cells using CSRNP1 Rabbit pAb (A7130). Secondary antibody: Cy3-conjugated Goat anti-Rabbit IgG (H+L) (AS007) at 1:500 dilution.



Immunohistochemistry analysis of paraffin-embedded Rat kidney using CSRNP1 Rabbit pAb (A7130) at dilution of 1:200 (40x lens). Microwave antigen retrieval performed with 0.01M PBS Buffer (pH 7.2) prior to IHC staining.



Immunohistochemistry analysis of paraffin-embedded Mouse brain using CSRNP1 Rabbit pAb (A7130) at dilution of 1:200 (40x lens). Microwave antigen retrieval performed with 0.01M PBS Buffer (pH 7.2) prior to IHC staining.