

[KO Validated] ANAPC5 Rabbit pAb

Catalog No.: A7109

KO Validated

1 Publications

Basic Information

Observed MW

85kDa

Calculated MW

85kDa

Category

Primary antibody

Applications

WB, IHC-P, IP, ELISA

Cross-Reactivity

Human, Mouse, Rat

Background

This gene encodes a tetratricopeptide repeat-containing component of the anaphase promoting complex/cyclosome (APC/C), a large E3 ubiquitin ligase that controls cell cycle progression by targeting a number of cell cycle regulators such as B-type cyclins for 26S proteasome-mediated degradation through ubiquitination. The encoded protein is required for the proper ubiquitination function of APC/C and for the interaction of APC/C with transcription coactivators. It also interacts with polyA binding protein and represses internal ribosome entry site-mediated translation. Multiple transcript variants encoding different isoforms have been found for this gene. These differences cause translation initiation at a downstream AUG and result in a shorter protein (isoform b), compared to isoform a.

Recommended Dilutions

WB 1:500 - 1:1000**IHC-P** 1:50 - 1:200**IP** 0.5µg-4µg antibody for
200µg-400µg extracts of
whole cells**ELISA** Recommended starting
concentration is 1 µg/mL.
Please optimize the
concentration based on
your specific assay
requirements.

Immunogen Information

Gene ID

51433

Swiss Prot

Q9UJX4

Immunogen

Recombinant protein (or fragment). This information is considered to be commercially sensitive.

Synonyms

APC5; C5

Product Information

Source

Rabbit

Isotype

IgG

Purification

Affinity purification

Storage

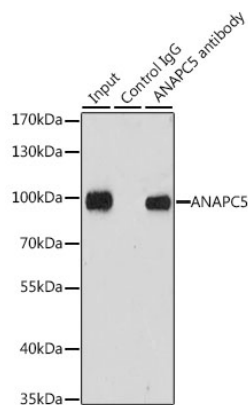
Store at -20°C. Avoid freeze / thaw cycles.

Buffer: PBS containing 50% glycerol, preserved with proclin300 or sodium azide (as specified on the Certificate of Analysis), pH 7.3.

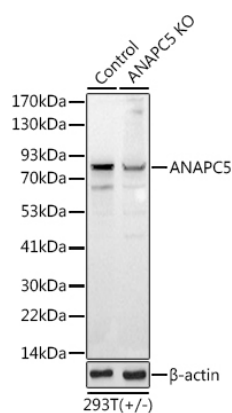
Contact

 | 400-999-6126 | cn.market@abclonal.com.cn | www.abclonal.com.cn

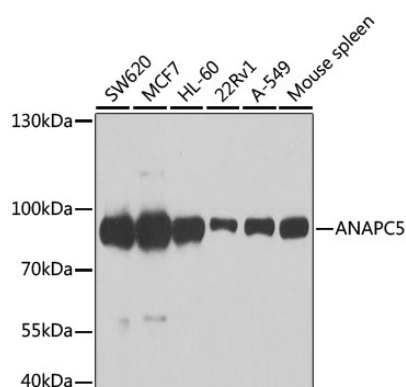
Validation Data



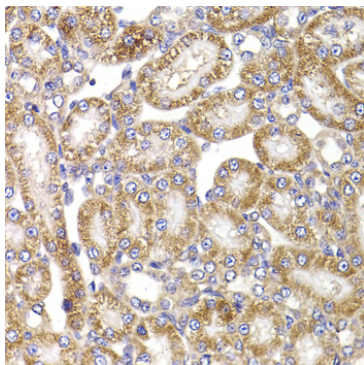
Immunoprecipitation analysis of 200 µg extracts of MCF-7 cells, using 3 µg ANAPC5 antibody (A7109). Western blot was performed from the immunoprecipitate using ANAPC5 antibody (A7109) at a dilution of 1:1000.



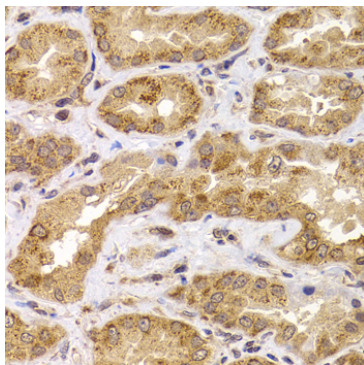
Western blot analysis of lysates from wild type (WT) and ANAPC5 knockout (KO) 293T cells, using [KO Validated] ANAPC5 Rabbit pAb (A7109) at 1:1000 dilution. Secondary antibody: HRP-conjugated Goat anti-Rabbit IgG (H+L) (AS014) at 1:10000 dilution. Lysates/proteins: 25µg per lane. Blocking buffer: 3% nonfat dry milk in TBST. Detection: ECL Basic Kit (RM00020). Exposure time: 30s.



Western blot analysis of various lysates using [KO Validated] ANAPC5 Rabbit pAb (A7109) at 1:1000 dilution. Secondary antibody: HRP-conjugated Goat anti-Rabbit IgG (H+L) (AS014) at 1:10000 dilution. Lysates/proteins: 25µg per lane. Blocking buffer: 3% nonfat dry milk in TBST. Detection: ECL Basic Kit (RM00020). Exposure time: 90s.



Immunohistochemistry analysis of paraffin-embedded Rat kidney using [KO Validated] ANAPC5 Rabbit pAb (A7109) at dilution of 1:100 (40x lens). Microwave antigen retrieval performed with 0.01M PBS Buffer (pH 7.2) prior to IHC staining.



Immunohistochemistry analysis of paraffin-embedded Human kidney using [KO Validated] ANAPC5 Rabbit pAb (A7109) at dilution of 1:100 (40x lens). Microwave antigen retrieval performed with 0.01M PBS Buffer (pH 7.2) prior to IHC staining.