

MTF2 Rabbit pAb

Catalog No.: A7077

Basic Information

Observed MW

67kDa

Calculated MW

67kDa

Category

Primary antibody

Applications

WB, ELISA

Cross-Reactivity

Human, Mouse, Rat

Background

Enables methylated histone binding activity and transcription corepressor binding activity. Predicted to be involved in several processes, including regulation of histone H3-K27 methylation; regulation of transcription by RNA polymerase II; and segment specification. Predicted to act upstream of or within cellular response to leukemia inhibitory factor. Located in cytoplasm; focal adhesion; and nucleoplasm.

Recommended Dilutions

WB 1:500 - 1:2000

ELISA Recommended starting concentration is 1 µg/mL. Please optimize the concentration based on your specific assay requirements.

Immunogen Information

Gene ID

22823

Swiss Prot

Q9Y483

Immunogen

Recombinant protein (or fragment). This information is considered to be commercially sensitive.

Synonyms

M96; PCL2; TDRD19A; dj976O13.2; MTF2

Contact

☎ | 400-999-6126

✉ | cn.market@abclonal.com.cn

🌐 | www.abclonal.com.cn

Product Information

Source

Rabbit

Isotype

IgG

Purification

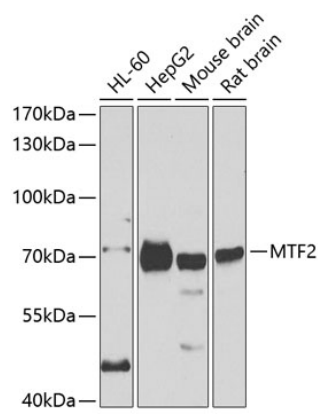
Affinity purification

Storage

Store at -20°C. Avoid freeze / thaw cycles.

Buffer: PBS containing 50% glycerol, preserved with proclin300 or sodium azide (as specified on the Certificate of Analysis), pH 7.3.

Validation Data



Western blot analysis of various lysates using MTF2 Rabbit pAb (A7077) at 1:1000 dilution.
Secondary antibody: HRP-conjugated Goat anti-Rabbit IgG (H+L) (AS014) at 1:10000 dilution.
Lysates/proteins: 25µg per lane.
Blocking buffer: 3% nonfat dry milk in TBST.