

SUB1 Rabbit pAb

Catalog No.: A7070

1 Publications

Basic Information

Observed MW

17kDa

Calculated MW

14kDa

Category

Primary antibody

Applications

WB, IF/ICC, IP, ELISA

Cross-Reactivity

Human, Mouse

Background

Enables identical protein binding activity; single-stranded DNA binding activity; and transcription coactivator activity. Involved in negative regulation of DNA metabolic process and regulation of transcription by RNA polymerase II. Located in nucleolus and nucleoplasm. Part of transcription regulator complex.

Recommended Dilutions

WB 1:500 - 1:2000

IF/ICC 1:50 - 1:100

IP 0.5µg-4µg antibody for
200µg-400µg extracts of
whole cells

ELISA Recommended starting
concentration is 1 µg/mL.
Please optimize the
concentration based on
your specific assay
requirements.

Immunogen Information

Gene ID

10923

Swiss Prot

P53999

Immunogen

Recombinant protein (or fragment). This information is considered to be commercially sensitive.

Synonyms

P15; PC4; p14; SUB1

Contact

☎ | 400-999-6126

✉ | cn.market@abclonal.com.cn

🌐 | www.abclonal.com.cn

Product Information

Source

Rabbit

Isotype

IgG

Purification

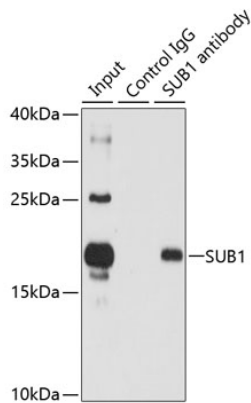
Affinity purification

Storage

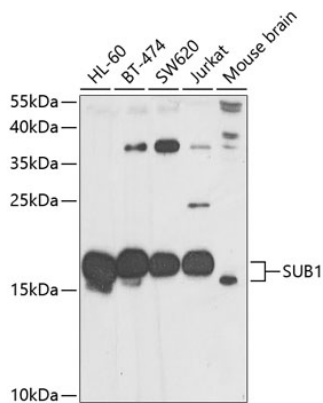
Store at -20°C. Avoid freeze / thaw cycles.

Buffer: PBS with 0.02% sodium azide, 50% glycerol, pH7.3.

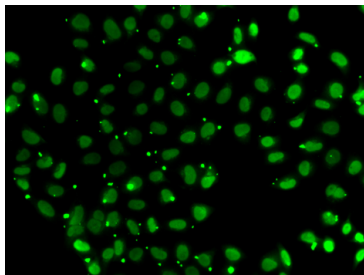
Validation Data



Immunoprecipitation analysis of 150 µg extracts of HL60 cells using 3 µg SUB1 antibody (A7070). Western blot was performed from the immunoprecipitate using SUB1 antibody (A7070) at a dilution of 1:500.



Western blot analysis of various lysates using SUB1 Rabbit pAb (A7070) at 1:1000 dilution.
Secondary antibody: HRP-conjugated Goat anti-Rabbit IgG (H+L) (AS014) at 1:10000 dilution.
Lysates/proteins: 25µg per lane.
Blocking buffer: 3% nonfat dry milk in TBST.
Detection: ECL Basic Kit (RM00020).
Exposure time: 30s.



Immunofluorescence analysis of A549 cells using SUB1 Rabbit pAb (A7070).Secondary antibody: Cy3-conjugated Goat anti-Rabbit IgG (H+L) (AS007) at 1:500 dilution.