

BAP31 Rabbit pAb

Catalog No.: A7056

Basic Information

Observed MW

28kDa

Calculated MW

28kDa

Category

Primary antibody

Applications

WB, IF/ICC, IP, ELISA

Cross-Reactivity

Human, Mouse, Rat

Background

This gene encodes a member of the B-cell receptor associated protein 31 superfamily. The encoded protein is a multi-pass transmembrane protein of the endoplasmic reticulum that is involved in the anterograde transport of membrane proteins from the endoplasmic reticulum to the Golgi and in caspase 8-mediated apoptosis. Microdeletions in this gene are associated with contiguous ABCD1/DXS1375E deletion syndrome (CADD5), a neonatal disorder. Alternative splicing of this gene results in multiple transcript variants. Two related pseudogenes have been identified on chromosome 16.

Recommended Dilutions

WB 1:500 - 1:2000**IF/ICC** 1:50 - 1:100**IP** 0.5µg-4µg antibody for
200µg-400µg extracts of
whole cells**ELISA** Recommended starting
concentration is 1 µg/mL.
Please optimize the
concentration based on
your specific assay
requirements.

Immunogen Information

Gene ID

10134

Swiss Prot

P51572

Immunogen

Recombinant protein (or fragment). This information is considered to be commercially sensitive.

Synonyms

CDM; DDCH; BAP31; 6C6-AG; DELXQ28; DXS1357E; MICRODELXq28

Product Information

Source

Rabbit

Isotype

IgG

Purification

Affinity purification

Storage

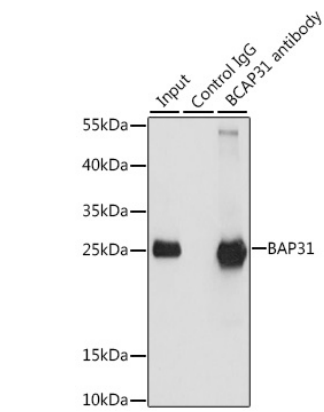
Store at -20°C. Avoid freeze / thaw cycles.

Buffer: PBS with 0.02% sodium azide, 50% glycerol, pH7.3.

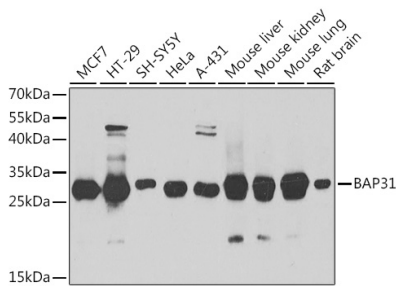
Contact

 | 400-999-6126 | cn.market@abclonal.com.cn | www.abclonal.com.cn

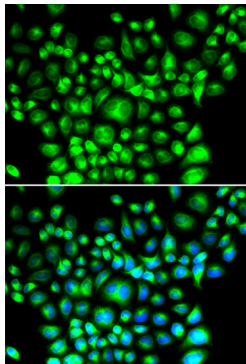
Validation Data



Immunoprecipitation analysis of 200 µg extracts of HeLa cells, using 3 µg BAP31 antibody (A7056). Western blot was performed from the immunoprecipitate using BAP31 antibody (A7056) at a dilution of 1:1000.



Western blot analysis of various lysates using BAP31 Rabbit pAb (A7056) at 1:1000 dilution. Secondary antibody: HRP-conjugated Goat anti-Rabbit IgG (H+L) (AS014) at 1:10000 dilution. Lysates/proteins: 25µg per lane. Blocking buffer: 3% nonfat dry milk in TBST. Detection: ECL Basic Kit (RM00020). Exposure time: 10s.



Immunofluorescence analysis of U2OS cells using BAP31 Rabbit pAb (A7056). Secondary antibody: Cy3-conjugated Goat anti-Rabbit IgG (H+L) (AS007) at 1:500 dilution. Blue: DAPI for nuclear staining.