

[KD Validated] glucose-6-phosphate isomerase Rabbit pAb

Catalog No.: A6916 **4 Publications**

Basic Information

Observed MW

60 kDa

Calculated MW

63 kDa

Category

Primary antibody

Applications

WB,IHC-P,ELISA

Cross-Reactivity

Human, Mouse, Rat

Background

This gene encodes a member of the glucose phosphate isomerase protein family. The encoded protein has been identified as a moonlighting protein based on its ability to perform mechanistically distinct functions. In the cytoplasm, the gene product functions as a glycolytic enzyme (glucose-6-phosphate isomerase) that interconverts glucose-6-phosphate and fructose-6-phosphate. Extracellularly, the encoded protein (also referred to as neuroleukin) functions as a neurotrophic factor that promotes survival of skeletal motor neurons and sensory neurons, and as a lymphokine that induces immunoglobulin secretion. The encoded protein is also referred to as autocrine motility factor based on an additional function as a tumor-secreted cytokine and angiogenic factor. Defects in this gene are the cause of nonspherocytic hemolytic anemia and a severe enzyme deficiency can be associated with hydrops fetalis, immediate neonatal death and neurological impairment. Alternative splicing results in multiple transcript variants.

Recommended Dilutions

WB 1:1000 - 1:5000

IHC-P 1:500 - 1:1000

ELISA Recommended starting concentration is 1 µg/mL. Please optimize the concentration based on your specific assay requirements.

Immunogen Information

Gene ID

2821

Swiss Prot

P06744

Immunogen

Recombinant protein (or fragment). This information is considered to be commercially sensitive.

Synonyms

AMF; NLK; PGI; PHI; GNPI; SA36; SA-36; glucose-6-phosphate isomerase

Contact

☎ | 400-999-6126

✉ | cn.market@abclonal.com.cn

🌐 | www.abclonal.com.cn

Product Information

Source

Rabbit

Isotype

IgG

Purification

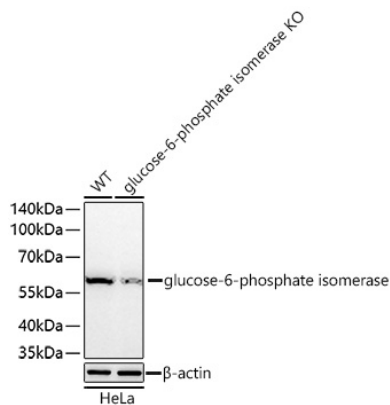
Affinity purification

Storage

Store at -20°C. Avoid freeze / thaw cycles.

Buffer: PBS containing 50% glycerol, preserved with proclin300 or sodium azide (as specified on the Certificate of Analysis), pH 7.3.

Validation Data



Western blot analysis of lysates from wild type (WT) and glucose-6-phosphate isomerase knockdown (KD) HeLa cells using [KD Validated] glucose-6-phosphate isomerase Rabbit pAb (A6916) at 1:5000 dilution incubated overnight at 4°C.

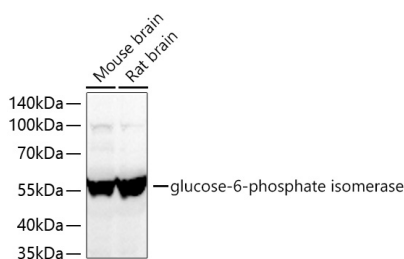
Secondary antibody: HRP-conjugated Goat anti-Rabbit IgG (H+L) (AS014) at 1:10000 dilution.

Lysates/proteins: 25 µg per lane.

Blocking buffer: 3% nonfat dry milk in TBST.

Detection: ECL Basic Kit (RM00020).

Exposure time: 10 s.



Western blot analysis of various lysates using [KD Validated] glucose-6-phosphate isomerase Rabbit pAb (A6916) at 1:5000 dilution incubated overnight at 4°C.

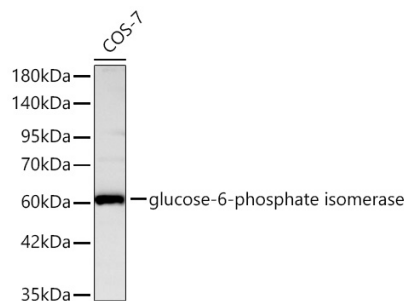
Secondary antibody: HRP-conjugated Goat anti-Rabbit IgG (H+L) (AS014) at 1:10000 dilution.

Lysates/proteins: 25 µg per lane.

Blocking buffer: 3% nonfat dry milk in TBST.

Detection: ECL Basic Kit (RM00020).

Exposure time: 15 s.



Western blot analysis of lysates from COS-7 cells using [KD Validated] glucose-6-phosphate isomerase Rabbit pAb (A6916) at 1:1000 dilution incubated overnight at 4°C.

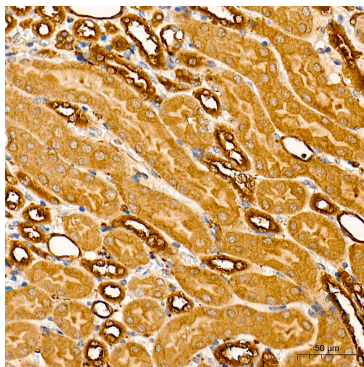
Secondary antibody: HRP-conjugated Goat anti-Rabbit IgG (H+L) (AS014) at 1:10000 dilution.

Lysates/proteins: 25 µg per lane.

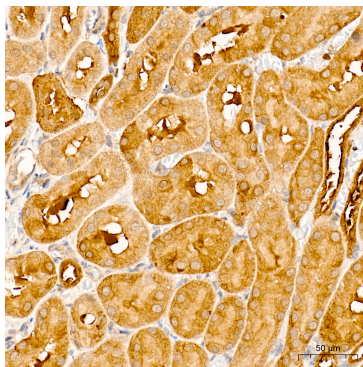
Blocking buffer: 3% nonfat dry milk in TBST.

Detection: ECL Basic Kit (RM00020).

Exposure time: 30 s.



Immunohistochemistry analysis of paraffin-embedded Mouse kidney tissue, High pressure, using [KD Validated] glucose-6-phosphate isomerase Rabbit pAb (A6916) at



Immunohistochemistry analysis of paraffin-embedded Rat kidney tissue, High pressure, using [KD Validated] glucose-6-phosphate isomerase Rabbit pAb (A6916) at a dilution

Validation Data

a dilution of 1:800 (40x lens). antigen retrieval performed with 0.01M Tris-EDTA Buffer(pH 9.0) prior to IHC staining.

of 1:800 (40x lens). antigen retrieval performed with 0.01M Tris-EDTA Buffer(pH 9.0) prior to IHC staining.