

GDF-8/Myostatin Rabbit pAb

Catalog No.: A6913

6 Publications

Basic Information

Observed MW

42kDa

Calculated MW

43kDa

Category

Primary antibody

Applications

ELISA, WB, IHC-P

Cross-Reactivity

Human, Mouse, Rat

Background

This gene encodes a secreted ligand of the TGF-beta (transforming growth factor-beta) superfamily of proteins. Ligands of this family bind various TGF-beta receptors leading to recruitment and activation of SMAD family transcription factors that regulate gene expression. The encoded preproprotein is proteolytically processed to generate each subunit of the disulfide-linked homodimer. This protein negatively regulates skeletal muscle cell proliferation and differentiation. Mutations in this gene are associated with increased skeletal muscle mass in humans and other mammals.

Recommended Dilutions

WB 1:500 - 1:1000

IHC-P 1:50 - 1:100

Immunogen Information

Gene ID

2660

Swiss Prot

O14793

Immunogen

Recombinant fusion protein containing a sequence corresponding to amino acids 267-375 of human GDF-8/Myostatin (NP_005250.1).

Synonyms

GDF8; MSLHP; GDF-8/Myostatin

Contact

 | 400-999-6126 | cn.market@abclonal.com.cn | www.abclonal.com.cn

Product Information

Source

Rabbit

Isotype

IgG

Purification

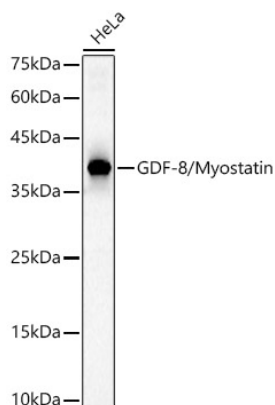
Affinity purification

Storage

Store at -20°C. Avoid freeze / thaw cycles.

Buffer: PBS with 0.01% thimerosal, 50% glycerol, pH7.3.

Validation Data



Western blot analysis of lysates from HeLa cells, using GDF-8/Myostatin Rabbit pAb (A6913) at 1:500 dilution.

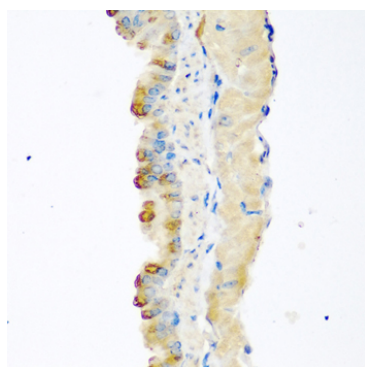
Secondary antibody: HRP Goat Anti-Rabbit IgG (H+L) (AS014) at 1:10000 dilution.

Lysates/proteins: 25ug per lane.

Blocking buffer: 3% nonfat dry milk in TBST.

Detection: ECL Basic Kit (RM00020).

Exposure time: 60s.



Immunohistochemistry analysis of paraffin-embedded Mouse lung using GDF-8/Myostatin Rabbit pAb (A6913) at dilution of 1:100 (40x lens). Perform microwave antigen retrieval with 10 mM PBS buffer pH 7.2 before commencing with IHC staining protocol.