

# Bcl9 Rabbit pAb

Catalog No.: A6795 **1 Publications**

## Basic Information

### Observed MW

160kDa/170kDa

### Calculated MW

149kDa

### Category

Primary antibody

### Applications

WB, ELISA

### Cross-Reactivity

Human

## Background

Enables beta-catenin binding activity. Acts upstream of or within several processes, including myotube differentiation involved in skeletal muscle regeneration; skeletal muscle cell differentiation; and somatic stem cell population maintenance. Located in cis-Golgi network and nucleus. Is expressed in several structures, including brain; eye; head surface ectoderm; metanephros; and thymus primordium. Orthologous to human BCL9 (BCL9 transcription coactivator).

## Recommended Dilutions

**WB** 1:500 - 1:2000

**ELISA** Recommended starting concentration is 1 µg/mL. Please optimize the concentration based on your specific assay requirements.

## Immunogen Information

### Gene ID

77578

### Swiss Prot

Q9D219

### Immunogen

Synthetic peptide. This information is considered to be commercially sensitive.

### Synonyms

Gm130; 2610202E01Rik; 8030475K17Rik; A330041G23Rik; Bcl9

## Contact

 | 400-999-6126

 | [cn.market@abclonal.com.cn](mailto:cn.market@abclonal.com.cn)

 | [www.abclonal.com.cn](http://www.abclonal.com.cn)

## Product Information

### Source

Rabbit

### Isotype

IgG

### Purification

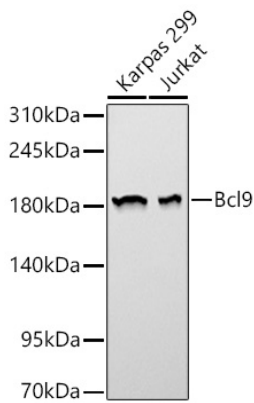
Affinity purification

### Storage

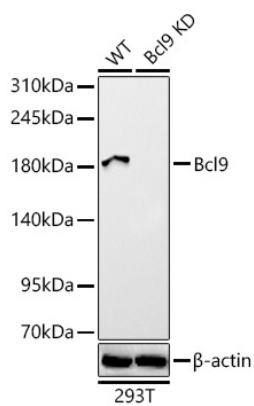
Store at -20°C. Avoid freeze / thaw cycles.

Buffer: PBS containing 50% glycerol, preserved with proclin300 or sodium azide (as specified on the Certificate of Analysis), pH 7.3.

## Validation Data



Western blot analysis of various lysates using [KD Validated] Bcl9 Rabbit pAb (A6795) at 1:1000 dilution.  
Secondary antibody: HRP-conjugated Goat anti-Rabbit IgG (H+L) (AS014) at 1:10000 dilution.  
Lysates / proteins: 25 µg per lane.  
Blocking buffer: 3 % nonfat dry milk in TBST.  
Detection: ECL Basic Kit (RM00020).  
Exposure time: 60s.



Western blot analysis of lysates from wild type (WT) and Bcl9 knockdown (KD) 293T cells using [KD Validated] Bcl9 Rabbit pAb (A6795) at 1:1000 dilution.  
Secondary antibody: HRP-conjugated Goat anti-Rabbit IgG (H+L) (AS014) at 1:10000 dilution.  
Lysates/proteins: 25 µg per lane.  
Blocking buffer: 3% nonfat dry milk in TBST.  
Detection: ECL Basic Kit (RM00020).  
Exposure time: 60s.