

PP2A Catalytic α Rabbit pAb

Catalog No.: A6702 **11 Publications**

Basic Information

Observed MW

36kDa

Calculated MW

36kDa

Category

Primary antibody

Applications

WB, IHC-P, IF/ICC, IP, ELISA

Cross-Reactivity

Human, Mouse, Rat

Background

This gene encodes the phosphatase 2A catalytic subunit. Protein phosphatase 2A is one of the four major Ser/Thr phosphatases, and it is implicated in the negative control of cell growth and division. It consists of a common heteromeric core enzyme, which is composed of a catalytic subunit and a constant regulatory subunit, that associates with a variety of regulatory subunits. This gene encodes an alpha isoform of the catalytic subunit.

Recommended Dilutions

WB	1:1000 - 1:5000
IHC-P	1:50 - 1:200
IF/ICC	1:50 - 1:200
IP	0.5 μ g-4 μ g antibody for 200 μ g-500 μ g extracts of whole cells
ELISA	Recommended starting concentration is 1 μ g/mL. Please optimize the concentration based on your specific assay requirements.

Contact

 | 400-999-6126

 | cn.market@abclonal.com.cn

 | www.abclonal.com.cn

Immunogen Information

Gene ID

5515

Swiss Prot

P67775

Immunogen

Recombinant protein (or fragment). This information is considered to be commercially sensitive.

Synonyms

RP-C; PP2Ac; PP2CA; NEDLBA; PP2Calpha; PP2A Catalytic α

Product Information

Source

Rabbit

Isotype

IgG

Purification

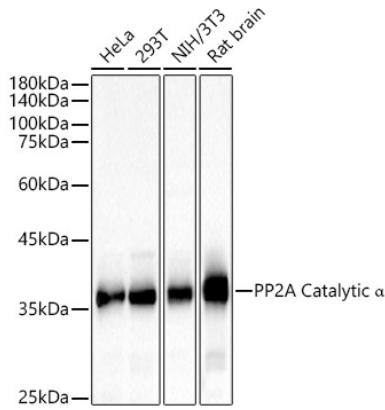
Affinity purification

Storage

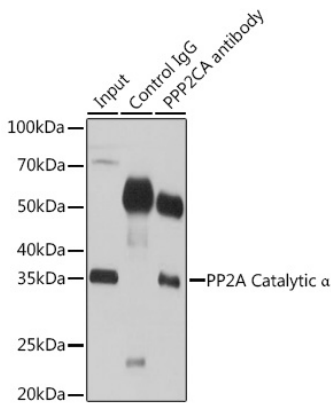
Store at -20°C. Avoid freeze / thaw cycles.

Buffer: PBS containing 50% glycerol, preserved with proclin300 or sodium azide (as specified on the Certificate of Analysis), pH 7.3.

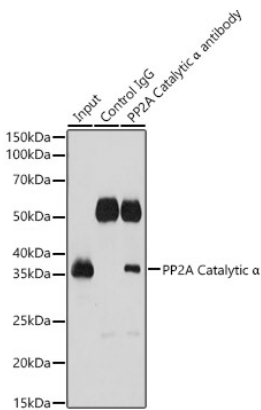
Validation Data



Western blot analysis of various lysates, using PP2A Catalytic α Rabbit pAb (A6702) at 1:2000 dilution. Secondary antibody: HRP-conjugated Goat anti-Rabbit IgG (H+L) (AS014) at 1:10000 dilution. Lysates/proteins: 25 μ g per lane. Blocking buffer: 3% nonfat dry milk in TBST. Detection: ECL Basic Kit (RM00020). Exposure time: 10s.

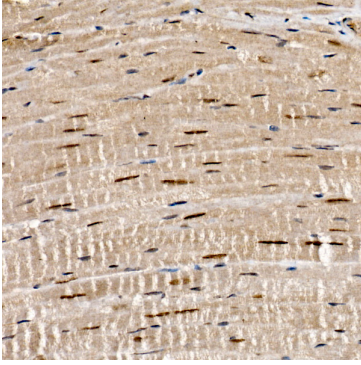


Immunoprecipitation analysis of 200 μ g extracts of 293T cells using 3 μ g PP2A Catalytic α antibody (A6702). Western blot was performed from the immunoprecipitate using PP2A Catalytic α antibody (A6702) at a dilution of 1:1000.

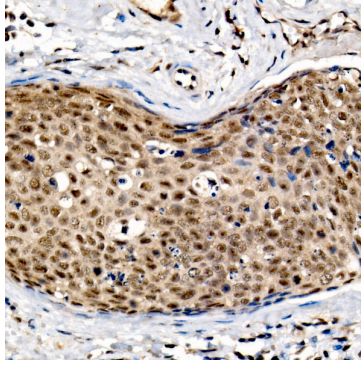


Immunoprecipitation analysis of 500 μ g extracts of Rat brain cells using 3 μ g PP2A Catalytic α antibody (A6702). Western blot was performed from the immunoprecipitate using PP2A Catalytic α antibody (A6702) at a dilution of 1:1000.

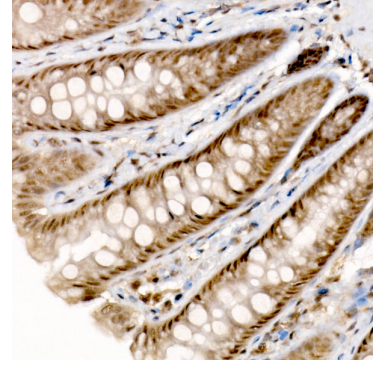
Validation Data



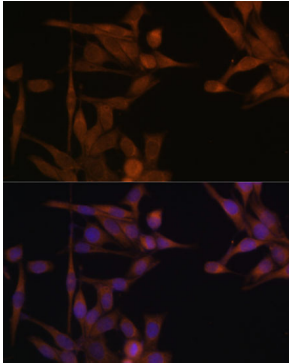
Immunohistochemistry analysis of paraffin-embedded Mouse heart tissue using PP2A Catalytic α Rabbit pAb (A6702) at a dilution of 1:100 (40x lens). High pressure antigen retrieval was performed with 0.01 M citrate buffer (pH 6.0) prior to IHC staining.



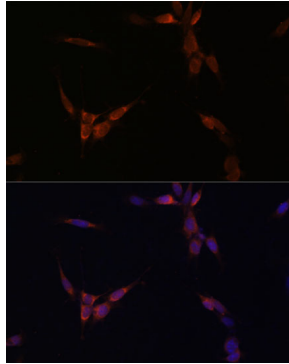
Immunohistochemistry analysis of paraffin-embedded Human cervical cancer tissue using PP2A Catalytic α Rabbit pAb (A6702) at a dilution of 1:100 (40x lens). High pressure antigen retrieval was performed with 0.01 M citrate buffer (pH 6.0) prior to IHC staining.



Immunohistochemistry analysis of paraffin-embedded Rat colon tissue using PP2A Catalytic α Rabbit pAb (A6702) at a dilution of 1:100 (40x lens). High pressure antigen retrieval was performed with 0.01 M citrate buffer (pH 6.0) prior to IHC staining.



Immunofluorescence analysis of HeLa cells using PP2A Catalytic α Rabbit pAb (A6702) at dilution of 1:100. Secondary antibody: Cy3-conjugated Goat anti-Rabbit IgG (H+L) (AS007) at 1:500 dilution. Blue: DAPI for nuclear staining.



Immunofluorescence analysis of NIH/3T3 cells using PP2A Catalytic α Rabbit pAb (A6702) at dilution of 1:100. Secondary antibody: Cy3-conjugated Goat anti-Rabbit IgG (H+L) (AS007) at 1:500 dilution. Blue: DAPI for nuclear staining.