

# KDM4B/JMJD2B Rabbit mAb

Catalog No.: A6670 **Recombinant** **5 Publications**

## Basic Information

### Observed MW

150 kDa

### Calculated MW

122 kDa

### Category

Primary antibody

### Applications

WB,IF/ICC,IP,ELISA,ChIP

### Cross-Reactivity

Human, Mouse, Rat

### CloneNo number

ARC1416

## Background

Enables histone H3-methyl-lysine-36 demethylase activity and histone H3-methyl-lysine-9 demethylase activity. Involved in histone H3-K36 demethylation and histone H3-K9 demethylation. Located in cytosol and nucleoplasm. Implicated in autosomal dominant non-syndromic intellectual disability; breast cancer; colorectal cancer; malignant peripheral nerve sheath tumor; and stomach cancer. Biomarker of several diseases, including alopecia areata; lung cancer; medulloblastoma; prostate cancer; and stomach cancer.

## Recommended Dilutions

**WB** 1:3000 - 1:20000**IF/ICC** 1:50 - 1:200**IP** 0.5µg-4µg antibody for 200µg-400µg extracts of whole cells**ELISA** Recommended starting concentration is 1 µg/mL. Please optimize the concentration based on your specific assay requirements.**ChIP** 5µg antibody for 10µg-15µg of Chromatin

## Contact

 | 400-999-6126 | [cn.market@abclonal.com.cn](mailto:cn.market@abclonal.com.cn)

## Immunogen Information

### Gene ID

23030

### Swiss Prot

O94953

### Immunogen

Synthetic peptide. This information is considered to be commercially sensitive.

### Synonyms

MRD65; JMJD2B; TDRD14B; KDM4B/JMJD2B

## Product Information

### Source

Rabbit

### Isotype

IgG

### Purification

Affinity purification

### Storage

Store at -20°C. Avoid freeze / thaw cycles.

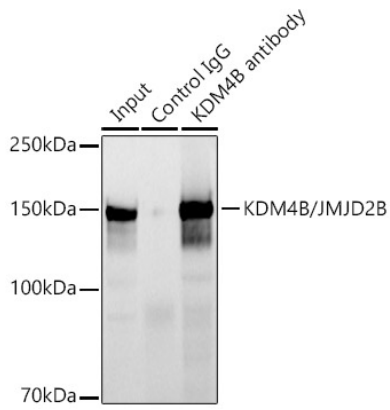
Buffer: PBS containing 50% glycerol and 0.05% BSA, preserved with proclin300 or sodium azide (as specified on the Certificate of Analysis), pH 7.3.



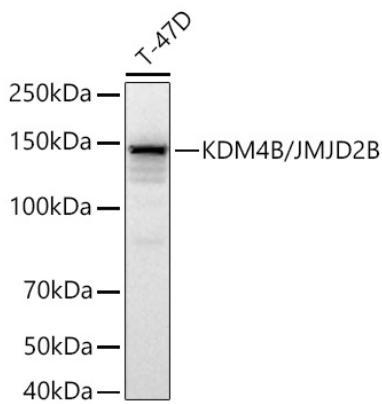
| [www.abclonal.com.cn](http://www.abclonal.com.cn)

---

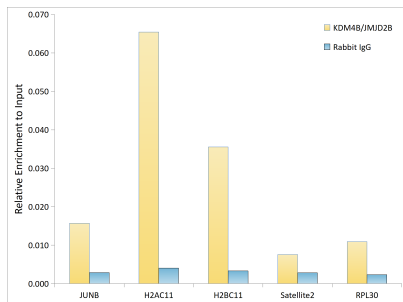
## Validation Data



Immunoprecipitation analysis of 300 µg extracts of HCT 116 cells using 3 µg KDM4B/JMJD2B Rabbit mAb (A6670). Western blot was performed from the immunoprecipitate using KDM4B/JMJD2B Rabbit mAb (A6670) at a dilution of 1:1000.



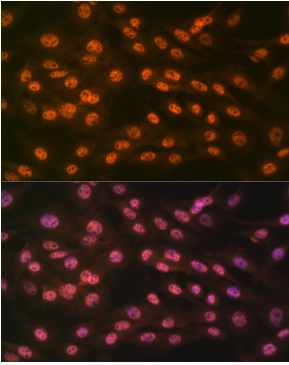
Western blot analysis of lysates from T-47D cells using KDM4B/JMJD2B Rabbit mAb (A6670) at 1:7000 dilution incubated at room temperature for 1.5 hours.  
Secondary antibody: HRP-conjugated Goat anti-Rabbit IgG (H+L) (AS014) at 1:10000 dilution.  
Lysates/proteins: 25 µg per lane.  
Blocking buffer: 3% nonfat dry milk in TBST.  
Detection: ECL Basic Kit (RM00020).  
Exposure time: 5 s.



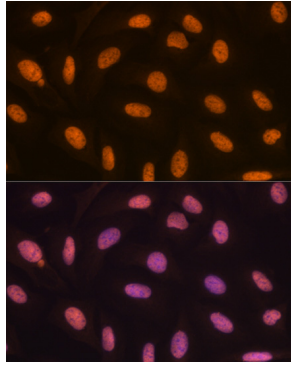
Chromatin immunoprecipitation analysis of extracts of 5637 cells, using KDM4B/JMJD2B Rabbit mAb (A6670) and rabbit IgG. The amount of immunoprecipitated DNA was checked by quantitative PCR. Histogram was constructed by the ratios of the immunoprecipitated DNA to the input.

## Validation Data

---



Immunofluorescence analysis of C6 cells using KDM4B/JMJD2B Rabbit mAb (A6670) at dilution of 1:100 (40x lens). Secondary antibody: Cy3-conjugated Goat anti-Rabbit IgG (H+L) (AS007) at 1:500 dilution. Blue: DAPI for nuclear staining.



Immunofluorescence analysis of U-2 OS cells using KDM4B/JMJD2B Rabbit mAb (A6670) at dilution of 1:100 (40x lens). Secondary antibody: Cy3-conjugated Goat anti-Rabbit IgG (H+L) (AS007) at 1:500 dilution. Blue: DAPI for nuclear staining.