

MYL3 Rabbit pAb

Catalog No.: A6662

1 Publications

Basic Information

Observed MW

22kDa

Calculated MW

22kDa

Category

Primary antibody

Applications

ELISA, WB, IF/ICC

Cross-Reactivity

Human, Mouse, Rat

Background

MYL3 encodes myosin light chain 3, an alkali light chain also referred to in the literature as both the ventricular isoform and the slow skeletal muscle isoform. Mutations in MYL3 have been identified as a cause of mid-left ventricular chamber type hypertrophic cardiomyopathy.

Recommended Dilutions

WB 1:500 - 1:2000

IF/ICC 1:50 - 1:200

Immunogen Information

Gene ID

4634

Swiss Prot

P08590

Immunogen

Recombinant fusion protein containing a sequence corresponding to amino acids 1-195 of human MYL3 (NP_000249.1).

Synonyms

CMH8; VLC1; VLCI; MLC1V; MLC1SB; MLC-IV/sb; MYL3

Contact

☎ | 400-999-6126

✉ | cn.market@abclonal.com.cn

🌐 | www.abclonal.com.cn

Product Information

Source

Rabbit

Isotype

IgG

Purification

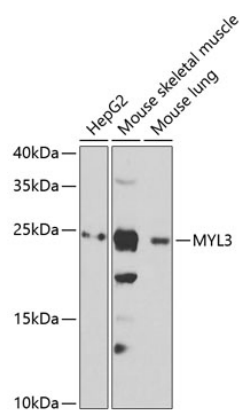
Affinity purification

Storage

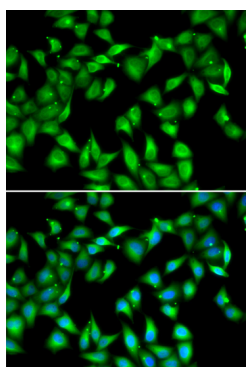
Store at -20°C. Avoid freeze / thaw cycles.

Buffer: PBS with 0.02% sodium azide, 50% glycerol, pH 7.3.

Validation Data



Western blot analysis of extracts of various cell lines, using MYL3 antibody (A6662) at 1:1000 dilution.
Secondary antibody: HRP Goat Anti-Rabbit IgG (H+L) (AS014) at 1:10000 dilution.
Lysates/proteins: 25µg per lane.
Blocking buffer: 3% nonfat dry milk in TBST.
Detection: ECL Basic Kit (RM00020).
Exposure time: 15s.



Immunofluorescence analysis of U2OS cells using MYL3 antibody (A6662). Blue: DAPI for nuclear staining.