

# [KO Validated] EEF1B2 Rabbit pAb

Catalog No.: A6580 **KO** **Validated** **1 Publications**

## Basic Information

### Observed MW

33kDa

### Calculated MW

25kDa

### Category

Primary antibody

### Applications

ELISA, WB, IHC-P, IF/ICC

### Cross-Reactivity

Human, Mouse, Rat

## Background

This gene encodes a translation elongation factor. The protein is a guanine nucleotide exchange factor involved in the transfer of aminoacylated tRNAs to the ribosome. Alternative splicing results in three transcript variants which differ only in the 5' UTR.

## Recommended Dilutions

|               |                |
|---------------|----------------|
| <b>WB</b>     | 1:500 - 1:2000 |
| <b>IHC-P</b>  | 1:50 - 1:200   |
| <b>IF/ICC</b> | 1:50 - 1:200   |

## Immunogen Information

### Gene ID

1933

### Swiss Prot

P24534

### Immunogen

Recombinant fusion protein containing a sequence corresponding to amino acids 1-225 of human EEF1B2 (NP\_001032752.1).

### Synonyms

EF1B; EEF1B; EEF1B1; B2

## Contact

|  |                           |
|--|---------------------------|
|  | 400-999-6126              |
|  | cn.market@abclonal.com.cn |
|  | www.abclonal.com.cn       |

## Product Information

### Source

Rabbit

### Isotype

IgG

### Purification

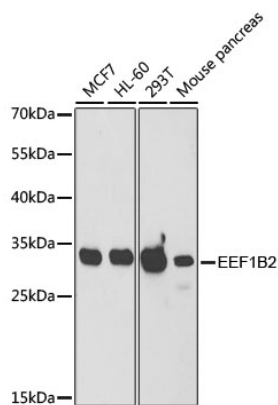
Affinity purification

### Storage

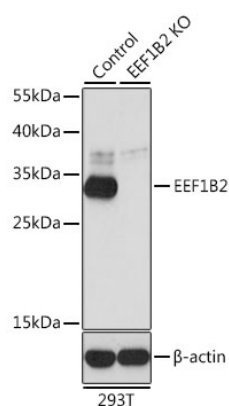
Store at -20°C. Avoid freeze / thaw cycles.

Buffer: PBS with 0.02% sodium azide, 50% glycerol, pH7.3.

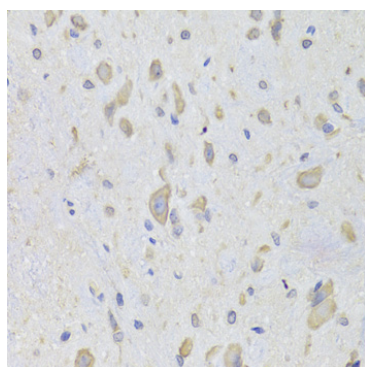
## Validation Data



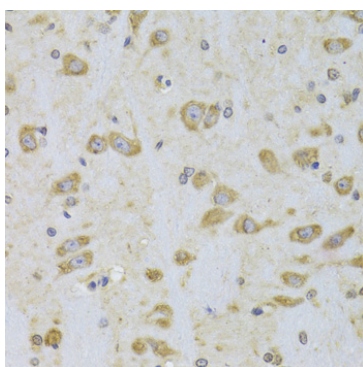
Western blot analysis of extracts of various cell lines, using EEF1B2 antibody (A6580) at 1:1000 dilution.  
 Secondary antibody: HRP Goat Anti-Rabbit IgG (H+L) (AS014) at 1:10000 dilution.  
 Lysates/proteins: 25µg per lane.  
 Blocking buffer: 3% nonfat dry milk in TBST.  
 Detection: ECL Basic Kit (RM00020).  
 Exposure time: 90s.



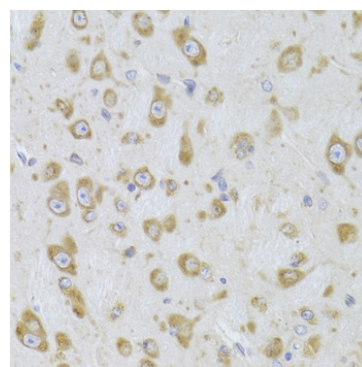
Western blot analysis of extracts from normal (control) and EEF1B2 knockout (KO) 293T cells, using EEF1B2 antibody (A6580) at 1:1000 dilution.  
 Secondary antibody: HRP Goat Anti-Rabbit IgG (H+L) (AS014) at 1:10000 dilution.  
 Lysates/proteins: 25µg per lane.  
 Blocking buffer: 3% nonfat dry milk in TBST.  
 Detection: ECL Basic Kit (RM00020).  
 Exposure time: 30s.



Immunohistochemistry analysis of paraffin-embedded rat spinal cord using EEF1B2 Antibody (A6580) at dilution of 1:100 (40x lens). Perform microwave antigen retrieval with 10 mM PBS buffer pH 7.2 before commencing with IHC staining protocol.



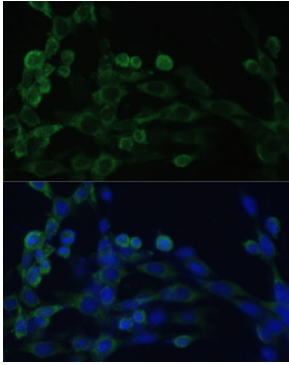
Immunohistochemistry analysis of paraffin-embedded rat brain using EEF1B2 Antibody (A6580) at dilution of 1:100 (40x lens). Perform microwave antigen retrieval with 10 mM PBS buffer pH 7.2 before commencing with IHC staining protocol.



Immunohistochemistry analysis of paraffin-embedded mouse brain using EEF1B2 Antibody (A6580) at dilution of 1:100 (40x lens). Perform microwave antigen retrieval with 10 mM PBS buffer pH 7.2 before commencing with IHC staining protocol.

## Validation Data

---



Immunofluorescence analysis of NIH/3T3 cells using EEF1B2 antibody (A6580) at dilution of 1:100. Blue: DAPI for nuclear staining.