

# CLDN2 Rabbit pAb

Catalog No.: A6560

1 Publications

## Basic Information

### Observed MW

20kDa

### Calculated MW

25kDa

### Category

Primary antibody

### Applications

ELISA, WB, IF/ICC

### Cross-Reactivity

Human

## Background

This gene product belongs to the claudin protein family whose members have been identified as major integral membrane proteins localized exclusively at tight junctions. Claudins are expressed in an organ-specific manner and regulate tissue-specific physiologic properties of tight junctions. This protein is expressed in the intestine. Alternatively spliced transcript variants with different 5' untranslated region have been found for this gene.

## Recommended Dilutions

WB 1:100 - 1:500

IF/ICC 1:50 - 1:100

## Immunogen Information

### Gene ID

9075

### Swiss Prot

P57739

### Immunogen

Recombinant fusion protein containing a sequence corresponding to amino acids 30-230 of human CLDN2 (NP\_001164566.1).

### Synonyms

OAZON; claudin-2; CLDN2

## Contact

☎ | 400-999-6126

✉ | [cn.market@abclonal.com.cn](mailto:cn.market@abclonal.com.cn)

🌐 | [www.abclonal.com.cn](http://www.abclonal.com.cn)

## Product Information

### Source

Rabbit

### Isotype

IgG

### Purification

Affinity purification

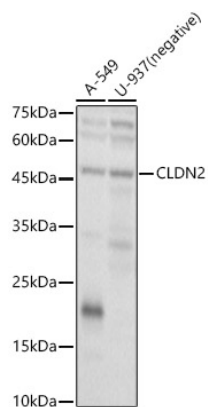
### Storage

Store at -20°C. Avoid freeze / thaw cycles.

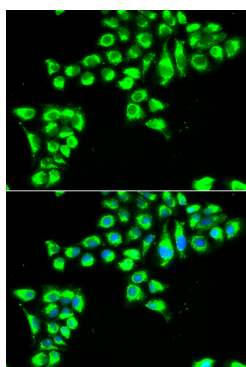
Buffer: PBS with 0.02% sodium azide, 50% glycerol, pH7.3.

## Validation Data

---



Western blot analysis of various lysates, using CLDN2 antibody (A6560) at 1:400 dilution.  
Secondary antibody: HRP Goat Anti-Rabbit IgG (H+L) (AS014) at 1:10000 dilution.  
Lysates/proteins: 25µg per lane.  
Blocking buffer: 3% nonfat dry milk in TBST.  
Detection: ECL Basic Kit (RM00020).  
Exposure time: 10s.



Immunofluorescence analysis of HeLa cells using CLDN2 antibody (A6560). Blue: DAPI for nuclear staining.