

MMP3 Rabbit pAb

Catalog No.: A6260

1 Publications

Basic Information

Observed MW

56kDa

Calculated MW

54kDa

Category

Primary antibody

Applications

WB,IF/ICC

Cross-Reactivity

Human

Background

Proteins of the matrix metalloproteinase (MMP) family are involved in the breakdown of extracellular matrix in normal physiological processes, such as embryonic development, reproduction, and tissue remodeling, as well as in disease processes, such as arthritis and metastasis. Most MMP's are secreted as inactive proproteins which are activated when cleaved by extracellular proteinases. This gene encodes an enzyme which degrades fibronectin, laminin, collagens III, IV, IX, and X, and cartilage proteoglycans. The enzyme is thought to be involved in wound repair, progression of atherosclerosis, and tumor initiation. The gene is part of a cluster of MMP genes which localize to chromosome 11q22.3.

Recommended Dilutions

WB 1:500 - 1:1000

IF/ICC 1:20 - 1:50

Immunogen Information

Gene ID

4314

Swiss Prot

P08254

Immunogen

Synthetic peptide. This information is considered to be commercially sensitive.

Synonyms

SL-1; STMY; STR1; CHDS6; MMP-3; STMY1; MMP3

Contact

 | 400-999-6126 | cn.market@abclonal.com.cn | www.abclonal.com.cn

Product Information

Source

Rabbit

Isotype

IgG

Purification

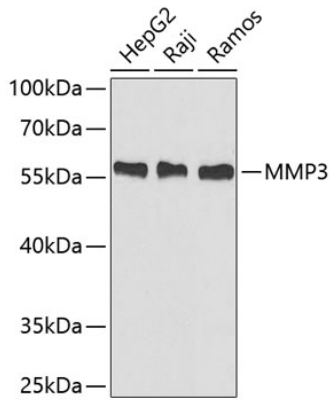
Affinity purification

Storage

Store at 4°C (regular) or -20°C (long term). Avoid freeze / thaw cycles.

Buffer: PBS with 0.02% sodium azide, pH7.3.

Validation Data



Western blot analysis of various lysates using MMP3 Rabbit pAb (A6260).
Secondary antibody: HRP-conjugated Goat anti-Rabbit IgG (H+L) (AS014) at 1:10000 dilution.
Lysates/proteins: 25µg per lane.
Blocking buffer: 3% nonfat dry milk in TBST.