

CBX8 Rabbit pAb

Catalog No.: A6222 **3 Publications**

Basic Information

Observed MW

50kDa

Calculated MW

43kDa

Category

Primary antibody

Applications

WB,IHC-P,ELISA

Cross-Reactivity

Human, Mouse, Rat

Background

Enables methylated histone binding activity. Involved in negative regulation of transcription by RNA polymerase II. Located in chromatin and nucleoplasm. Part of PRC1 complex. Biomarker of esophagus squamous cell carcinoma and glioblastoma.

Recommended Dilutions

WB 1:500 - 1:2000

IHC-P 1:50 - 1:200

ELISA Recommended starting concentration is 1 µg/mL. Please optimize the concentration based on your specific assay requirements.

Immunogen Information

Gene ID

57332

Swiss Prot

Q9HC52

Immunogen

Recombinant protein (or fragment). This information is considered to be commercially sensitive.

Synonyms

PC3; RC1; CBX8

Contact

☎ | 400-999-6126

✉ | cn.market@abclonal.com.cn

🌐 | www.abclonal.com.cn

Product Information

Source

Rabbit

Isotype

IgG

Purification

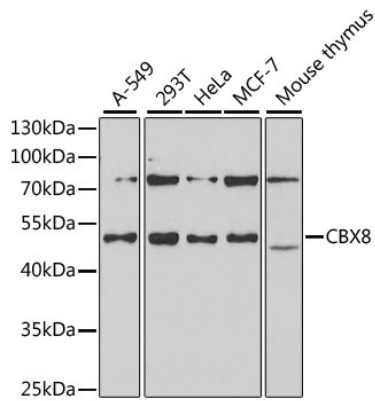
Affinity purification

Storage

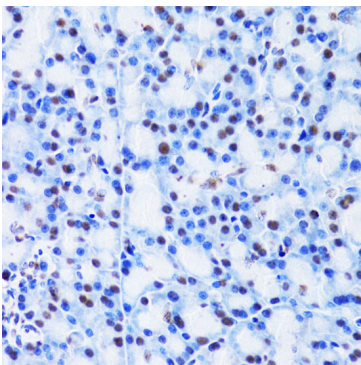
Store at -20°C. Avoid freeze / thaw cycles.

Buffer: PBS containing 50% glycerol, preserved with proclin300 or sodium azide (as specified on the Certificate of Analysis), pH 7.3.

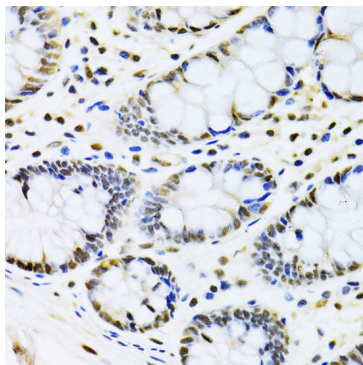
Validation Data



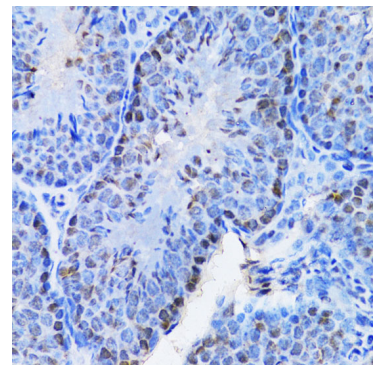
Western blot analysis of various lysates using CBX8 Rabbit pAb (A6222) at 1:1000 dilution. Secondary antibody: HRP-conjugated Goat anti-Rabbit IgG (H+L) (AS014) at 1:10000 dilution. Lysates/proteins: 25µg per lane. Blocking buffer: 3% nonfat dry milk in TBST. Detection: ECL Basic Kit (RM00020). Exposure time: 60s.



Immunohistochemistry analysis of paraffin-embedded Rat pancreas using CBX8 Rabbit pAb (A6222) at dilution of 1:100 (40x lens). Microwave antigen retrieval performed with 0.01M PBS Buffer (pH 7.2) prior to IHC staining.



Immunohistochemistry analysis of paraffin-embedded Human colon using CBX8 Rabbit pAb (A6222) at dilution of 1:100 (40x lens). Microwave antigen retrieval performed with 0.01M PBS Buffer (pH 7.2) prior to IHC staining.



Immunohistochemistry analysis of paraffin-embedded Mouse testis using CBX8 Rabbit pAb (A6222) at dilution of 1:100 (40x lens). Microwave antigen retrieval performed with 0.01M PBS Buffer (pH 7.2) prior to IHC staining.