

KHDRBS2 Rabbit pAb

Catalog No.: A6102

Basic Information

Observed MW

39kDa

Calculated MW

39kDa

Category

Primary antibody

Applications

WB,IHC-P,ELISA

Cross-Reactivity

Human, Mouse

Background

Predicted to enable mRNA binding activity and poly(A) binding activity. Predicted to be involved in regulation of alternative mRNA splicing, via spliceosome. Predicted to be located in nucleoplasm. Predicted to be active in nucleus.

Recommended Dilutions

WB 1:500 - 1:1000

IHC-P 1:100 - 1:200

ELISA Recommended starting concentration is 1 µg/mL. Please optimize the concentration based on your specific assay requirements.

Immunogen Information

Gene ID

202559

Swiss Prot

Q5VWX1

Immunogen

Synthetic peptide. This information is considered to be commercially sensitive.

Synonyms

SLM1; SLM-1; KHDRBS2

Contact

 | 400-999-6126

 | cn.market@abclonal.com.cn

 | www.abclonal.com.cn

Product Information

Source

Rabbit

Isotype

IgG

Purification

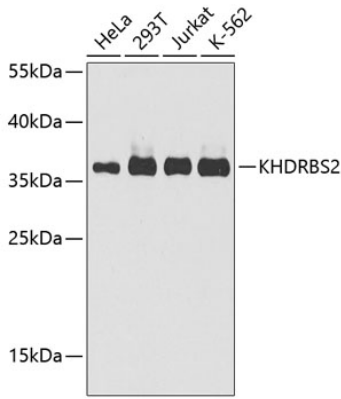
Affinity purification

Storage

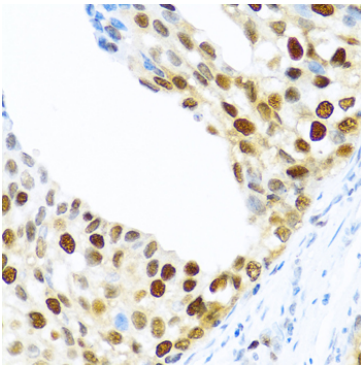
Store at -20°C. Avoid freeze / thaw cycles.

Buffer: PBS containing 50% glycerol, preserved with proclin300 or sodium azide (as specified on the Certificate of Analysis), pH 7.3.

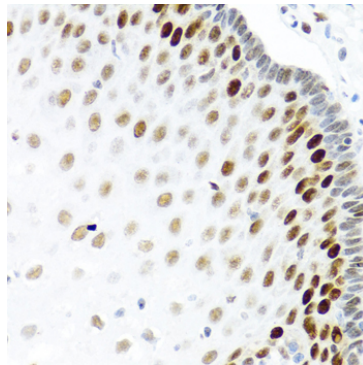
Validation Data



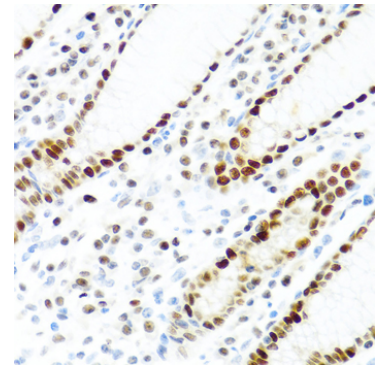
Western blot analysis of various lysates using KHDRBS2 Rabbit pAb (A6102) at 1:1000 dilution. Secondary antibody: HRP-conjugated Goat anti-Rabbit IgG (H+L) (AS014) at 1:10000 dilution. Lysates/proteins: 25µg per lane. Blocking buffer: 3% nonfat dry milk in TBST. Detection: ECL Enhanced Kit (RM00021). Exposure time: 30s.



Immunohistochemistry analysis of paraffin-embedded Human prostate cancer using KHDRBS2 Rabbit pAb (A6102) at dilution of 1:100 (40x lens). Microwave antigen retrieval performed with 0.01M PBS Buffer (pH 7.2) prior to IHC staining.



Immunohistochemistry analysis of paraffin-embedded Human esophagus using KHDRBS2 Rabbit pAb (A6102) at dilution of 1:100 (40x lens). Microwave antigen retrieval performed with 0.01M PBS Buffer (pH 7.2) prior to IHC staining.



Immunohistochemistry analysis of paraffin-embedded Human stomach using KHDRBS2 Rabbit pAb (A6102) at dilution of 1:100 (40x lens). Microwave antigen retrieval performed with 0.01M PBS Buffer (pH 7.2) prior to IHC staining.