

CNOT1 Rabbit pAb

Catalog No.: A5969

2 Publications

Basic Information

Observed MW

267kDa

Calculated MW

267kDa

Category

Primary antibody

Applications

WB,IF/ICC,ELISA

Cross-Reactivity

Human, Mouse

Background

Enables armadillo repeat domain binding activity; molecular adaptor activity; and nuclear receptor binding activity. Contributes to poly(A)-specific ribonuclease activity. Involved in several processes, including negative regulation of signal transduction; positive regulation of cytoplasmic mRNA processing body assembly; and regulation of gene expression. Located in P-body and cytosol. Part of CCR4-NOT complex. Implicated in holoprosencephaly.

Recommended Dilutions

WB 1:200 - 1:2000

IF/ICC 1:50 - 1:200

ELISA Recommended starting concentration is 1 µg/mL. Please optimize the concentration based on your specific assay requirements.

Immunogen Information

Gene ID

23019

Swiss Prot

A5YKK6

Immunogen

Recombinant protein (or fragment). This information is considered to be commercially sensitive.

Synonyms

NOT1; CDC39; HPE12; NOT1H; VIBOS; AD-005; CNOT1

Contact

☎ | 400-999-6126

✉ | cn.market@abclonal.com.cn

🌐 | www.abclonal.com.cn

Product Information

Source

Rabbit

Isotype

IgG

Purification

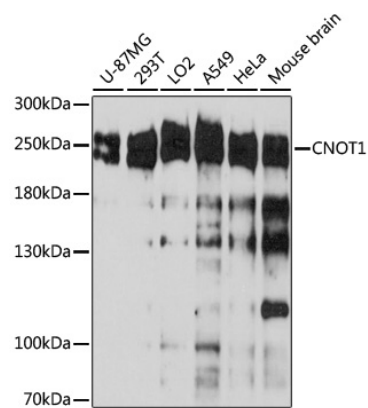
Affinity purification

Storage

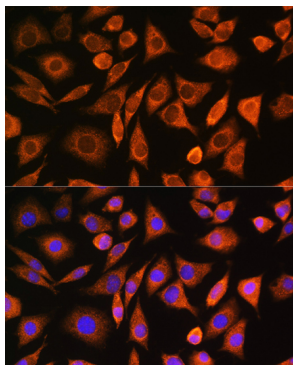
Store at -20°C. Avoid freeze / thaw cycles.

Buffer: PBS with 0.01% thimerosal, 50% glycerol, pH7.3.

Validation Data



Western blot analysis of various lysates, using CNOT1 Rabbit pAb (A5969) at 1:3000 dilution. Secondary antibody: HRP-conjugated Goat anti-Rabbit IgG (H+L) (AS014) at 1:10000 dilution. Lysates/proteins: 25µg per lane. Blocking buffer: 3% nonfat dry milk in TBST. Detection: ECL Basic Kit (RM00020). Exposure time: 30s.



Immunofluorescence analysis of L929 cells using CNOT1 Rabbit pAb (A5969) at dilution of 1:100. Secondary antibody: Cy3-conjugated Goat anti-Rabbit IgG (H+L) (AS007) at 1:500 dilution. Blue: DAPI for nuclear staining.