

# WAPL Rabbit mAb

Catalog No.: A5923 **Recombinant**

## Basic Information

### Observed MW

150kDa

### Calculated MW

133kDa

### Category

Primary antibody

### Applications

WB,IF/ICC,IP,ELISA

### Cross-Reactivity

Human, Mouse

### CloneNo number

ARC2088

## Background

Involved in several processes, including negative regulation of DNA replication; negative regulation of chromatin binding activity; and regulation of sister chromatid cohesion. Located in several cellular components, including Golgi apparatus; intercellular bridge; and microtubule cytoskeleton.

## Recommended Dilutions

**WB** 1:1000 - 1:3000

**IF/ICC** 1:50 - 1:200

**IP** 0.5µg-4µg antibody for 200µg-400µg extracts of whole cells

**ELISA** Recommended starting concentration is 1 µg/mL. Please optimize the concentration based on your specific assay requirements.

## Contact

☎ | 400-999-6126

✉ | [cn.market@abclonal.com.cn](mailto:cn.market@abclonal.com.cn)

🌐 | [www.abclonal.com.cn](http://www.abclonal.com.cn)

## Immunogen Information

### Gene ID

23063

### Swiss Prot

Q7Z5K2

### Immunogen

Synthetic peptide. This information is considered to be commercially sensitive.

### Synonyms

FOE; WAPAL; KIAA0261; WAPL

## Product Information

### Source

Rabbit

### Isotype

IgG

### Purification

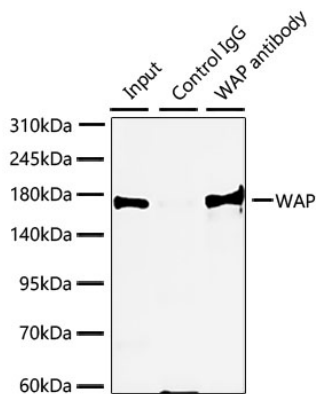
Affinity purification

### Storage

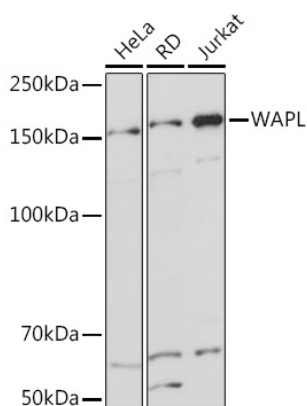
Store at -20°C. Avoid freeze / thaw cycles.

Buffer: PBS containing 50% glycerol and 0.05% BSA, preserved with proclin300 or sodium azide (as specified on the Certificate of Analysis), pH 7.3.

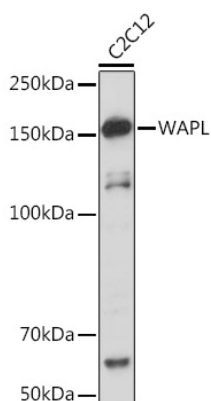
## Validation Data



Immunoprecipitation of WAPL from 300  $\mu$ g extracts of HeLa cells was performed using 3  $\mu$ g of WAPL Rabbit mAb (A5923). Rabbit Control IgG (AC005) was used to precipitate the Control IgG sample. IP samples were eluted with 1X Laemmli Buffer. The Input lane represents 10% of the total input. Western blot analysis of immunoprecipitates was conducted using WAPL Rabbit mAb (A5923) at a dilution of 1:1000.



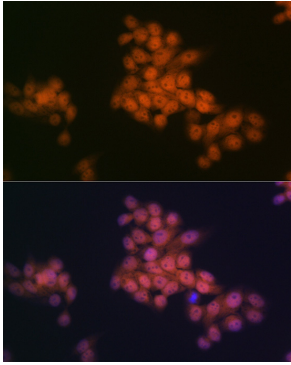
Western blot analysis of various lysates using WAPL Rabbit mAb (A5923) at 1:1000 dilution. Secondary antibody: HRP-conjugated Goat anti-Rabbit IgG (H+L) (AS014) at 1:10000 dilution. Lysates/proteins: 25 $\mu$ g per lane. Blocking buffer: 3% nonfat dry milk in TBST. Detection: ECL Basic Kit (RM00020). Exposure time: 1s.



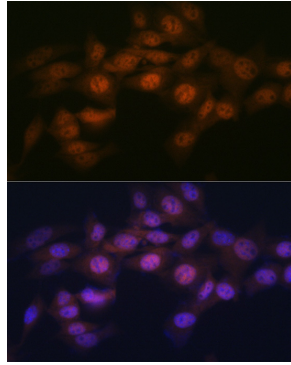
Western blot analysis of lysates from C2C12 cells, using WAPL Rabbit mAb (A5923) at 1:1000 dilution. Secondary antibody: HRP-conjugated Goat anti-Rabbit IgG (H+L) (AS014) at 1:10000 dilution. Lysates/proteins: 25 $\mu$ g per lane. Blocking buffer: 3% nonfat dry milk in TBST. Detection: ECL Basic Kit (RM00020). Exposure time: 10s.

## Validation Data

---



Immunofluorescence analysis of HeLa cells using WAPL Rabbit mAb (A5923) at dilution of 1:100 (40x lens). Secondary antibody: Cy3-conjugated Goat anti-Rabbit IgG (H+L) (AS007) at 1:500 dilution. Blue: DAPI for nuclear staining.



Immunofluorescence analysis of NIH-3T3 cells using WAPL Rabbit mAb (A5923) at dilution of 1:100 (40x lens). Secondary antibody: Cy3-conjugated Goat anti-Rabbit IgG (H+L) (AS007) at 1:500 dilution. Blue: DAPI for nuclear staining.