

MRPS30 Rabbit pAb

Catalog No.: A5841

1 Publications

Basic Information

Observed MW

54kDa

Calculated MW

50kDa

Category

Primary antibody

Applications

WB,IF/ICC,IP,ELISA

Cross-Reactivity

Human, Mouse, Rat

Background

Mammalian mitochondrial ribosomal proteins are encoded by nuclear genes and help in protein synthesis within the mitochondrion. Mitochondrial ribosomes (mitoribosomes) consist of a small 28S subunit and a large 39S subunit. They have an estimated 75% protein to rRNA composition compared to prokaryotic ribosomes, where this ratio is reversed. Another difference between mammalian mitoribosomes and prokaryotic ribosomes is that the latter contain a 5S rRNA. Among different species, the proteins comprising the mitoribosome differ greatly in sequence, and sometimes in biochemical properties, which prevents easy recognition by sequence homology. This gene encodes a 28S subunit protein that is similar to the chicken pro-apoptotic protein p52. Transcript variants using alternative promoters or polyA sites have been mentioned in the literature but the complete description of these sequences is not available.

Recommended Dilutions

WB 1:500 - 1:2000**IF/ICC** 1:50 - 1:100**IP** 0.5µg-4µg antibody for
200µg-400µg extracts of
whole cells**ELISA** Recommended starting
concentration is 1 µg/mL.
Please optimize the
concentration based on
your specific assay
requirements.

Contact

 | 400-999-6126 | cn.market@abclonal.com.cn | www.abclonal.com.cn

Immunogen Information

Gene ID

10884

Swiss Prot

Q9NP92

Immunogen

Recombinant protein (or fragment). This information is considered to be commercially sensitive.

Synonyms

PAP; PDCD9; S30mt; MRP-S30; MRPS30

Product Information

Source

Rabbit

Isotype

IgG

Purification

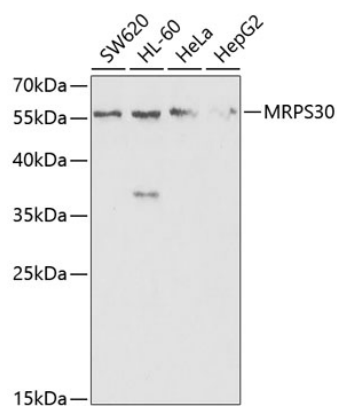
Affinity purification

Storage

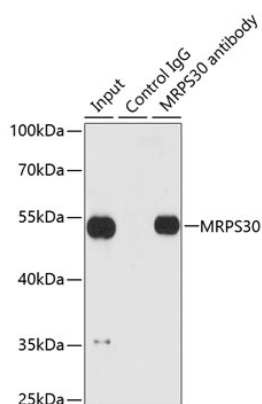
Store at -20°C. Avoid freeze / thaw cycles.

Buffer: PBS with 0.02% sodium azide, 50% glycerol, pH7.3.

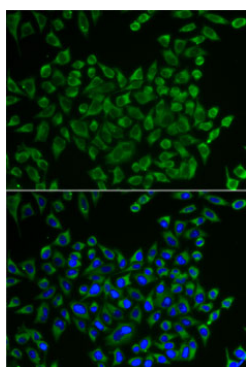
Validation Data



Western blot analysis of various lysates using MRPS30 Rabbit pAb (A5841) at 1:1000 dilution. Secondary antibody: HRP-conjugated Goat anti-Rabbit IgG (H+L) (AS014) at 1:10000 dilution. Lysates/proteins: 25µg per lane. Blocking buffer: 3% nonfat dry milk in TBST. Detection: ECL Basic Kit (RM00020). Exposure time: 90s.



Immunoprecipitation analysis of 200 µg extracts of HepG2 cells using 1 µg MRPS30 antibody (A5841). Western blot was performed from the immunoprecipitate using MRPS30 antibody (A5841) at a dilution of 1:1000.



Immunofluorescence analysis of U2OS cells using MRPS30 Rabbit pAb (A5841). Secondary antibody: Cy3-conjugated Goat anti-Rabbit IgG (H+L) (AS007) at 1:500 dilution. Blue: DAPI for nuclear staining.