

[KO Validated] Lsh/HELLS Rabbit pAb

Catalog No.: A5831 **KO** **Validated** **3 Publications**

Basic Information

Observed MW

120kDa

Calculated MW

97kDa

Category

Primary antibody

Applications

WB,IP,ELISA

Cross-Reactivity

Human, Mouse, Rat

Background

This gene encodes a lymphoid-specific helicase. Other helicases function in processes involving DNA strand separation, including replication, repair, recombination, and transcription. This protein is thought to be involved with cellular proliferation and may play a role in leukemogenesis. Alternatively spliced transcript variants encoding different isoforms have been identified.

Recommended Dilutions

WB 1:500 - 1:2000

IP 0.5µg-4µg antibody for
200µg-400µg extracts of
whole cells

ELISA Recommended starting
concentration is 1 µg/mL.
Please optimize the
concentration based on
your specific assay
requirements.

Immunogen Information

Gene ID

3070

Swiss Prot

Q9NRZ9

Immunogen

Recombinant protein (or fragment). This information is considered to be commercially sensitive.

Synonyms

LSH; ICF4; PASG; SMARCA6; Nbla10143; LS

Contact

☎ | 400-999-6126

✉ | cn.market@abclonal.com.cn

🌐 | www.abclonal.com.cn

Product Information

Source

Rabbit

Isotype

IgG

Purification

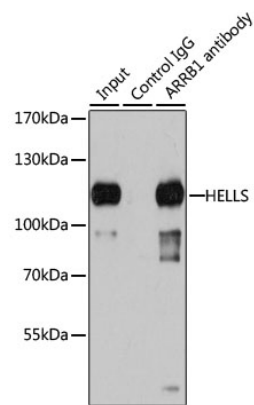
Affinity purification

Storage

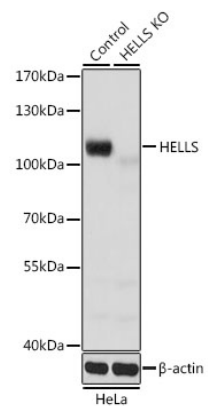
Store at -20°C. Avoid freeze / thaw cycles.

Buffer: PBS containing 50% glycerol, preserved with proclin300 or sodium azide (as specified on the Certificate of Analysis), pH 7.3.

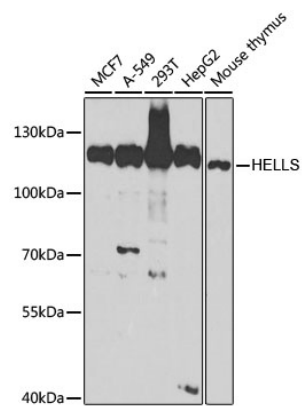
Validation Data



Immunoprecipitation analysis of 200 µg extracts of 293T cells using 1 µg Lsh/HELLS antibody (A5831). Western blot was performed from the immunoprecipitate using Lsh/HELLS antibody (A5831) at a dilution of 1:1000.



Western blot analysis of lysates from wild type (WT) and Lsh/HELLS knockout (KO) HeLa cells, using [KO Validated] Lsh/HELLS Rabbit pAb (A5831) at 1:1000 dilution. Secondary antibody: HRP-conjugated Goat anti-Rabbit IgG (H+L) (AS014) at 1:10000 dilution. Lysates/proteins: 25µg per lane. Blocking buffer: 3% nonfat dry milk in TBST. Detection: ECL Basic Kit (RM00020). Exposure time: 5s.



Western blot analysis of various lysates using [KO Validated] Lsh/HELLS Rabbit pAb (A5831) at 1:1000 dilution. Secondary antibody: HRP-conjugated Goat anti-Rabbit IgG (H+L) (AS014) at 1:10000 dilution. Lysates/proteins: 25µg per lane. Blocking buffer: 3% nonfat dry milk in TBST. Detection: ECL Basic Kit (RM00020). Exposure time: 90s.