

# EZH2/KMT6 Rabbit pAb

Catalog No.: A5743 **2 Publications**

## Basic Information

### Observed MW

98kDa

### Calculated MW

85kDa

### Category

Primary antibody

### Applications

WB,IHC-P,IP,ELISA

### Cross-Reactivity

Human, Mouse, Rat

## Background

This gene encodes a member of the Polycomb-group (PcG) family. PcG family members form multimeric protein complexes, which are involved in maintaining the transcriptional repressive state of genes over successive cell generations. This protein associates with the embryonic ectoderm development protein, the VAV1 oncoprotein, and the X-linked nuclear protein. This protein may play a role in the hematopoietic and central nervous systems. Multiple alternatively spliced transcript variants encoding distinct isoforms have been identified for this gene.

## Recommended Dilutions

**WB** 1:500 - 1:1000

**IHC-P** 1:50 - 1:200

**IP** 0.5µg-4µg antibody for  
200µg-400µg extracts of  
whole cells

**ELISA** Recommended starting  
concentration is 1 µg/mL.  
Please optimize the  
concentration based on  
your specific assay  
requirements.

## Immunogen Information

### Gene ID

2146

### Swiss Prot

Q15910

### Immunogen

Recombinant protein (or fragment). This information is considered to be commercially sensitive.

### Synonyms

WVS; ENX1; KMT6; WVS2; ENX-1; EZH2b; KMT6A; EZH2/KMT6

## Contact

☎ | 400-999-6126

✉ | [cn.market@abclonal.com.cn](mailto:cn.market@abclonal.com.cn)

🌐 | [www.abclonal.com.cn](http://www.abclonal.com.cn)

## Product Information

### Source

Rabbit

### Isotype

IgG

### Purification

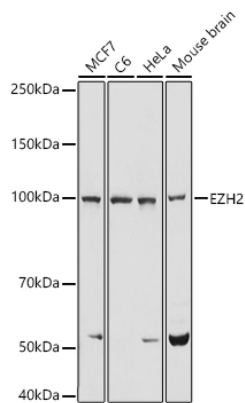
Affinity purification

### Storage

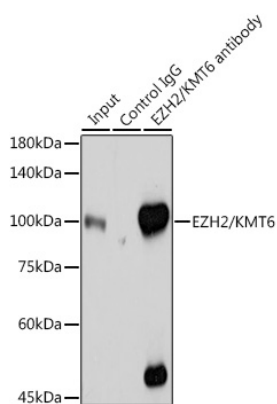
Store at -20°C. Avoid freeze / thaw cycles.

Buffer: PBS containing 50% glycerol, preserved with proclin300 or sodium azide (as specified on the Certificate of Analysis), pH 7.3.

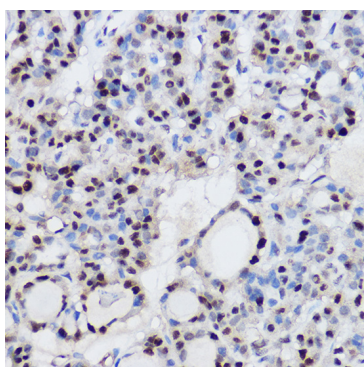
## Validation Data



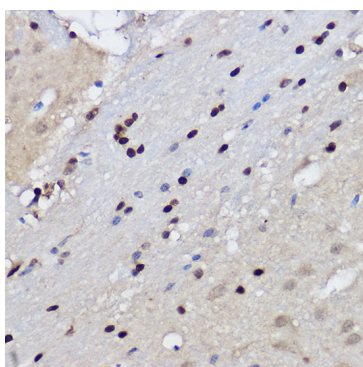
Western blot analysis of various lysates using EZH2/KMT6 Rabbit pAb (A5743) at 1:1000 dilution. Secondary antibody: HRP-conjugated Goat anti-Rabbit IgG (H+L) (AS014) at 1:10000 dilution. Lysates/proteins: 25µg per lane. Blocking buffer: 3% nonfat dry milk in TBST. Detection: ECL Basic Kit (RM00020). Exposure time: 5s.



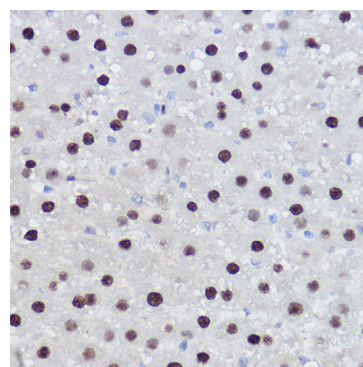
Immunoprecipitation analysis of 300 µg extracts of HeLa cells using 3 µg EZH2/KMT6 antibody (A5743). Western blot was performed from the immunoprecipitate using EZH2/KMT6 antibody (A5743) at a dilution of 1:1000.



Immunohistochemistry analysis of paraffin-embedded Human thyroid cancer using EZH2/KMT6 Rabbit pAb (A5743) at dilution of 1:100 (40x lens). High pressure antigen retrieval performed with 0.01M Citrate buffer (pH 6.0) prior to IHC staining.



Immunohistochemistry analysis of paraffin-embedded Mouse brain using EZH2/KMT6 Rabbit pAb (A5743) at dilution of 1:100 (40x lens). High pressure antigen retrieval performed with 0.01M Citrate buffer (pH 6.0) prior to IHC staining.



Immunohistochemistry analysis of paraffin-embedded Rat liver using EZH2/KMT6 Rabbit pAb (A5743) at dilution of 1:100 (40x lens). High pressure antigen retrieval performed with 0.01M Citrate buffer (pH 6.0) prior to IHC staining.