

CD14 Rabbit pAb

Catalog No.: A5737 **2 Publications**

Basic Information

Observed MW

60 kDa

Calculated MW

40 kDa

Category

Primary antibody

Applications

WB,IF/ICC,IHC-P,ELISA

Cross-Reactivity

Human, Mouse, Rat

Background

The protein encoded by this gene is a surface antigen that is preferentially expressed on monocytes/macrophages. It cooperates with other proteins to mediate the innate immune response to bacterial lipopolysaccharide, and to viruses. This gene has been identified as a target candidate in the treatment of SARS-CoV-2-infected patients to potentially lessen or inhibit a severe inflammatory response. Alternative splicing results in multiple transcript variants encoding the same protein.

Recommended Dilutions

WB 1:500 - 1:1000**IF/ICC** 1:50 - 1:200**IHC-P** 1:400 - 1:1600**ELISA** Recommended starting concentration is 1 µg/mL. Please optimize the concentration based on your specific assay requirements.

Immunogen Information

Gene ID

929

Swiss Prot

P08571

Immunogen

This information is considered to be commercially sensitive.

Synonyms

CD14

Contact

 | 400-999-6126 | cn.market@abclonal.com.cn | www.abclonal.com.cn

Product Information

Source

Rabbit

Isotype

IgG

Purification

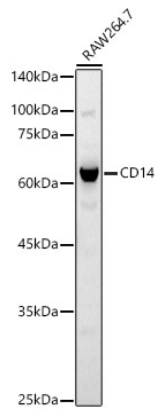
Affinity purification

Storage

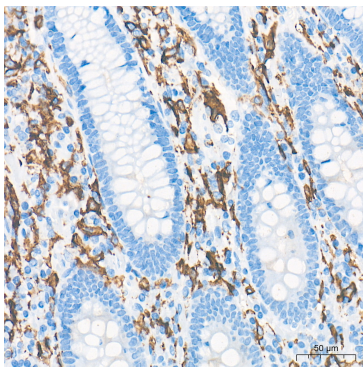
Store at -20°C. Avoid freeze / thaw cycles.

Buffer: PBS, pH 7.3, containing 50% glycerol. Preserved with Proclin300 or sodium azide. May contain 0.05% BSA as specified on the Certificate of Analysis.

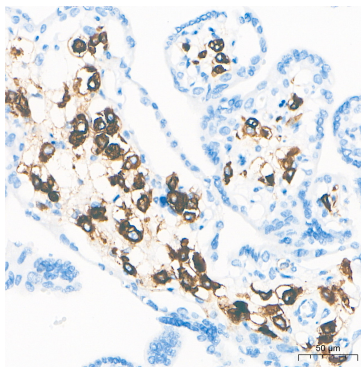
Validation Data



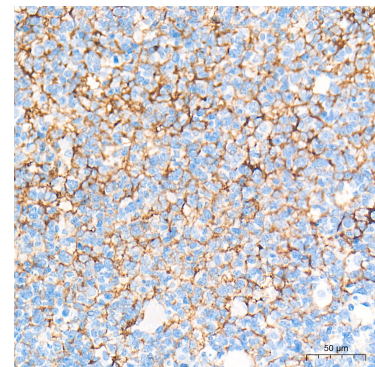
Western blot analysis of lysates from RAW264.7 cells, using CD14 Rabbit pAb (A5737) at 1:600 dilution. Secondary antibody: HRP-conjugated Goat anti-Rabbit IgG (H+L) (AS014) at 1:10000 dilution. Lysates/proteins: 25µg per lane. Blocking buffer: 3% nonfat dry milk in TBST. Detection: ECL Basic Kit (RM00020). Exposure time: 30s.



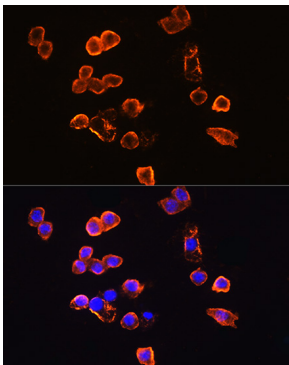
Immunohistochemistry analysis of paraffin-embedded Human colon tissue using CD14 Rabbit pAb (A5737) at a dilution of 1:800 (40x lens). High pressure antigen retrieval performed with 0.01M Tris-EDTA Buffer (pH 9.0) prior to IHC staining.



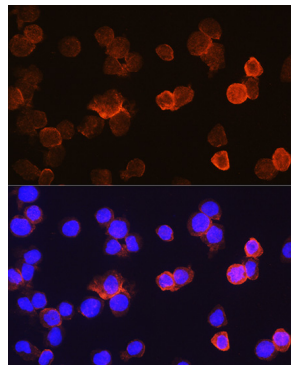
Immunohistochemistry analysis of paraffin-embedded Human placenta tissue using CD14 Rabbit pAb (A5737) at a dilution of 1:800 (40x lens). High pressure antigen retrieval performed with 0.01M Tris-EDTA Buffer (pH 9.0) prior to IHC staining.



Immunohistochemistry analysis of paraffin-embedded Human tonsil tissue using CD14 Rabbit pAb (A5737) at a dilution of 1:800 (40x lens). High pressure antigen retrieval performed with 0.01M Tris-EDTA Buffer (pH 9.0) prior to IHC staining.



Immunofluorescence analysis of RAW264.7 cells using CD14 Rabbit pAb (A5737) at dilution of 1:100. Blue: DAPI for nuclear staining.



Immunofluorescence analysis of THP-1 cells using CD14 Rabbit pAb (A5737) at dilution of 1:100. Blue: DAPI for nuclear staining.