

[KO Validated] CDK5 Rabbit pAb

Catalog No.: A5730 **KO** **Validated** **5 Publications**

Basic Information

Observed MW

30kDa

Calculated MW

33kDa

Category

Primary antibody

Applications

WB, IF/ICC, IP, ELISA

Cross-Reactivity

Human, Mouse, Rat


Background

This gene encodes a proline-directed serine/threonine kinase that is a member of the cyclin-dependent kinase family of proteins. Unlike other members of the family, the protein encoded by this gene does not directly control cell cycle regulation. Instead the protein, which is predominantly expressed at high levels in mammalian postmitotic central nervous system neurons, functions in diverse processes such as synaptic plasticity and neuronal migration through phosphorylation of proteins required for cytoskeletal organization, endocytosis and exocytosis, and apoptosis. In humans, an allelic variant of the gene that results in undetectable levels of the protein has been associated with lethal autosomal recessive lissencephaly-7. Alternative splicing results in multiple transcript variants.

Recommended Dilutions

WB 1:500 - 1:1000**IF/ICC** 1:10 - 1:100**IP** 0.5µg-4µg antibody for
200µg-400µg extracts of
whole cells**ELISA** Recommended starting
concentration is 1 µg/mL.
Please optimize the
concentration based on
your specific assay
requirements.

Contact

 | 400-999-6126 | cn.market@abclonal.com.cn | www.abclonal.com.cn

Immunogen Information

Gene ID

1020

Swiss Prot

Q00535

Immunogen

Recombinant protein (or fragment). This information is considered to be commercially sensitive.

Synonyms

LIS7; PSSALRE; K5

Product Information

Source

Rabbit

Isotype

IgG

Purification

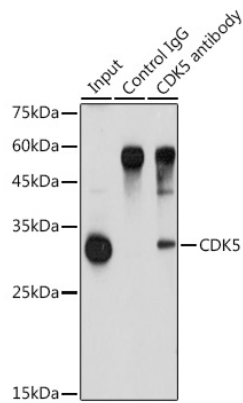
Affinity purification

Storage

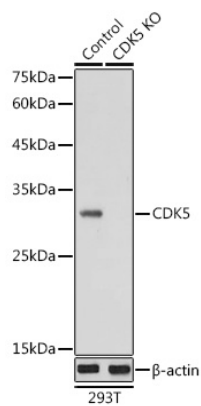
Store at -20°C. Avoid freeze / thaw cycles.

Buffer: PBS with 0.09% Sodium azide, 50% glycerol, pH7.3.

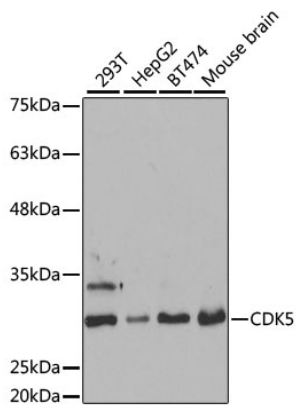
Validation Data



Immunoprecipitation analysis of 900 µg extracts of A-549 cells using 3 µg CDK5 antibody (A5730). Western blot was performed from the immunoprecipitate using CDK5 antibody (A5730) at a dilution of 1:1000.

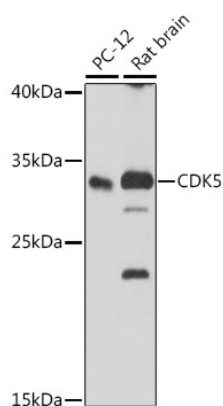


Western blot analysis of lysates from wild type (WT) and CDK5 knockout (KO) 293T cells, using [KO Validated] CDK5 Rabbit pAb (A5730) at 1:1000 dilution. Secondary antibody: HRP-conjugated Goat anti-Rabbit IgG (H+L) (AS014) at 1:10000 dilution. Lysates/proteins: 25µg per lane. Blocking buffer: 3% nonfat dry milk in TBST. Detection: ECL Basic Kit (RM00020). Exposure time: 1s.

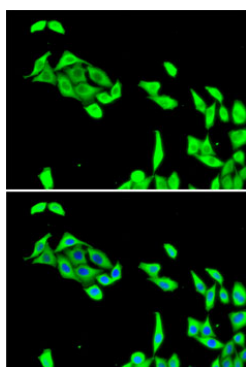


Western blot analysis of various lysates using [KO Validated] CDK5 Rabbit pAb (A5730) at 1:1000 dilution. Secondary antibody: HRP-conjugated Goat anti-Rabbit IgG (H+L) (AS014) at 1:10000 dilution. Lysates/proteins: 25µg per lane. Blocking buffer: 3% nonfat dry milk in TBST. Detection: ECL Basic Kit (RM00020). Exposure time: 30s.

Validation Data



Western blot analysis of various lysates using [KO Validated] CDK5 Rabbit pAb (A5730) at 1:1000 dilution. Secondary antibody: HRP-conjugated Goat anti-Rabbit IgG (H+L) (AS014) at 1:10000 dilution. Lysates/proteins: 25µg per lane. Blocking buffer: 3% nonfat dry milk in TBST. Detection: ECL Basic Kit (RM00020). Exposure time: 90s.



Immunofluorescence analysis of U2OS cells using [KO Validated] CDK5 Rabbit pAb (A5730). Secondary antibody: Cy3-conjugated Goat anti-Rabbit IgG (H+L) (AS007) at 1:500 dilution. Blue: DAPI for nuclear staining.