

# FUT2 Rabbit pAb

Catalog No.: A5721

## Basic Information

### Observed MW

35kDa

### Calculated MW

39kDa

### Category

Primary antibody

### Applications

WB, ELISA

### Cross-Reactivity

Human

## Background

This gene is one of two encoding the galactoside 2-L-fucosyltransferase enzyme. The encoded protein is important for the final step in the soluble ABO blood group antigen synthesis pathway. It is also involved in cell-cell interaction, cell surface expression, and cell proliferation. Mutations in this gene are a cause of the H-Bombay blood group where red blood cells lack the H antigen.

## Recommended Dilutions

**WB** 1:500 - 1:1000

**ELISA** Recommended starting concentration is 1 µg/mL. Please optimize the concentration based on your specific assay requirements.

## Immunogen Information

### Gene ID

2524

### Swiss Prot

Q10981

### Immunogen

Recombinant protein (or fragment). This information is considered to be commercially sensitive.

### Synonyms

SE; Se2; sej; SEC2; B12QTL1; FUT2

## Contact

☎ | 400-999-6126

✉ | [cn.market@abclonal.com.cn](mailto:cn.market@abclonal.com.cn)

🌐 | [www.abclonal.com.cn](http://www.abclonal.com.cn)

## Product Information

### Source

Rabbit

### Isotype

IgG

### Purification

Affinity purification

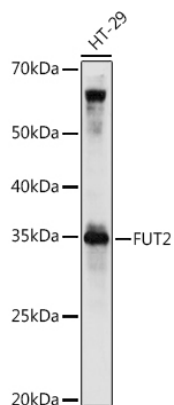
### Storage

Store at -20°C. Avoid freeze / thaw cycles.

Buffer: PBS with 0.02% sodium azide, 50% glycerol, pH 7.3.

## Validation Data

---



Western blot analysis of lysates from HT-29 cells, using FUT2 Rabbit pAb (A5721) at 1:1000 dilution.  
Secondary antibody: HRP-conjugated Goat anti-Rabbit IgG (H+L) (AS014) at 1:10000 dilution.  
Lysates/proteins: 25µg per lane.  
Blocking buffer: 3% nonfat dry milk in TBST.  
Detection: ECL Basic Kit (RM00020).  
Exposure time: 30s.