

# LC3A/LC3B Rabbit pAb

Catalog No.: A5618

32 Publications

## Basic Information

**Observed MW**

14kDa/16kDa

**Calculated MW**

14kDa

**Category**

Primary antibody

**Applications**

ELISA, WB, IHC-P, IF/ICC

**Cross-Reactivity**

Human, Mouse, Rat

## Background

MAP1A and MAP1B are microtubule-associated proteins which mediate the physical interactions between microtubules and components of the cytoskeleton. MAP1A and MAP1B each consist of a heavy chain subunit and multiple light chain subunits. The protein encoded by this gene is one of the light chain subunits and can associate with either MAP1A or MAP1B. Two transcript variants encoding different isoforms have been found for this gene. The expression of variant 1 is suppressed in many tumor cell lines, suggesting that may be involved in carcinogenesis.

## Recommended Dilutions

<b>WB</b>	1:500 - 1:2000
<b>IHC-P</b>	1:50 - 1:200
<b>IF/ICC</b>	1:50 - 1:200

## Immunogen Information

**Gene ID**

84557/81631

**Swiss Prot**

Q9GZQ8/Q9H492

**Immunogen**

A synthetic peptide corresponding to a sequence within amino acids 1-60 of human LC3A (NP\_115903.1).

**Synonyms**

MAP1LC3B; ATG8F; LC3B; MAP1A/1BLC3; MAP1LC3B-a; MAP1LC3A; ATG8E; LC3; LC3A; MAP1ALC3; MAP1BLC3; LC3A/LC3B

## Contact

	400-999-6126
	cn.market@abclonal.com.cn
	www.abclonal.com.cn

## Product Information

**Source**

Rabbit

**Isotype**

IgG

**Purification**

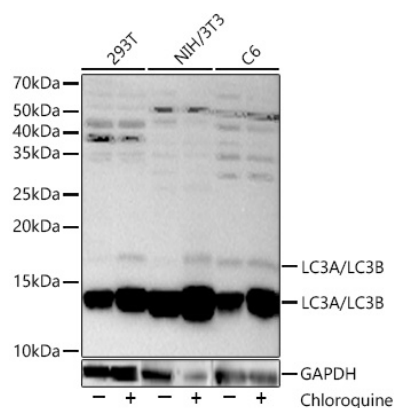
Affinity purification

**Storage**

Store at -20°C. Avoid freeze / thaw cycles.

Buffer: PBS with 0.01% thimerosal, 50% glycerol, pH7.3.

## Validation Data



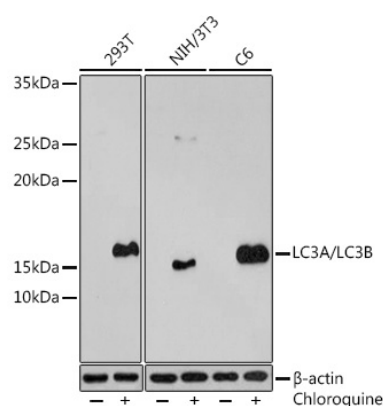
Western blot analysis of various lysates, using LC3A/LC3B Rabbit pAb (A5618) at 1:2000 dilution. 293T, NIH/3T3 and C6 cells were treated by Chloroquine (50  $\mu$ M) at 37°C for 20 hours. Secondary antibody: HRP Goat Anti-Rabbit IgG (H+L) (AS014) at 1:10000 dilution.

Lysates/proteins: 25ug per lane.

Blocking buffer: 3% nonfat dry milk in TBST.

Detection: ECL Basic Kit (RM00020).

Exposure time: 30s.



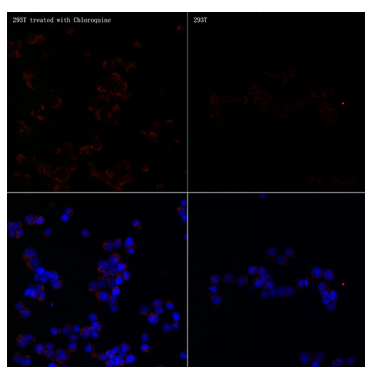
Western blot analysis of various lysates using LC3A/LC3B Rabbit pAb (A5618) at 1:500 dilution. 293T cells were treated by Chloroquine (50  $\mu$ M) at 37°C for 20 hours. NIH/3T3 cells were treated by Chloroquine (50  $\mu$ M) at 37°C for 20 hours. C6 cells were treated by Chloroquine (50  $\mu$ M) at 37°C for 20 hours. Secondary antibody: HRP Goat Anti-Rabbit IgG (H+L) (AS014) at 1:10000 dilution.

Lysates/proteins: 25 $\mu$ g per lane.

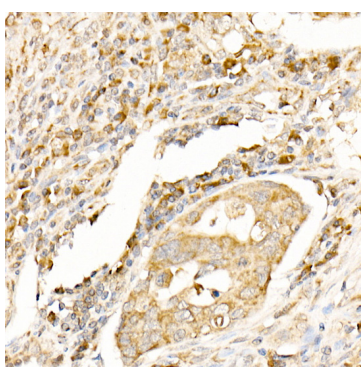
Blocking buffer: 3% BSA.

Detection: ECL Enhanced Kit (RM00021).

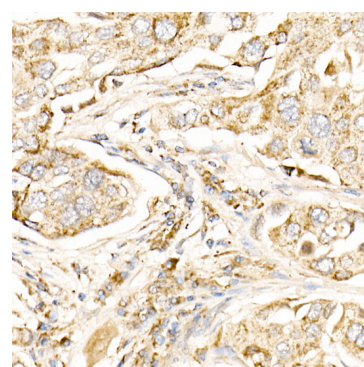
Exposure time: 3min.



Immunofluorescence analysis of 293T cells treated with Chloroquine and 293T cells using LC3A/LC3B Rabbit pAb (A5618) at dilution of 1:100 (40x lens). Secondary antibody: Cy3 Goat Anti-Rabbit IgG (H+L) (AS007) at 1:500 dilution. Blue: DAPI for nuclear staining.



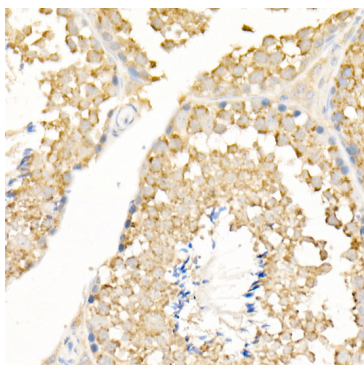
Immunohistochemistry analysis of LC3A/LC3B in paraffin-embedded human colon carcinoma using LC3A/LC3B Rabbit pAb (A5618) at dilution of 1:100 (40x lens). Perform high pressure antigen retrieval with 10 mM citrate buffer pH 6.0 before commencing with IHC staining protocol.



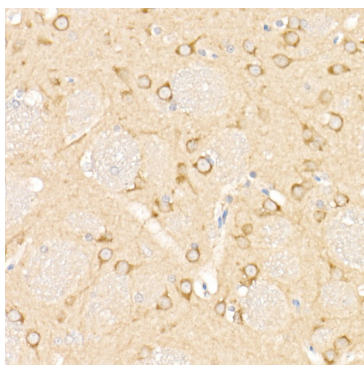
Immunohistochemistry analysis of LC3A/LC3B in paraffin-embedded human lung cancer using LC3A/LC3B Rabbit pAb (A5618) at dilution of 1:100 (40x lens). Perform high pressure antigen retrieval with 10 mM citrate buffer pH 6.0 before commencing with IHC staining protocol.

## Validation Data

---



Immunohistochemistry analysis of LC3A/LC3B in paraffin-embedded mouse testis using LC3A/LC3B Rabbit pAb (A5618) at dilution of 1:100 (40x lens). Perform high pressure antigen retrieval with 10 mM citrate buffer pH 6.0 before commencing with IHC staining protocol.



Immunohistochemistry analysis of LC3A/LC3B in paraffin-embedded rat brain using LC3A/LC3B Rabbit pAb (A5618) at dilution of 1:100 (40x lens). Perform high pressure antigen retrieval with 10 mM citrate buffer pH 6.0 before commencing with IHC staining protocol.