

SKIV2L2 Rabbit pAb

Catalog No.: A5576

4 Publications

Basic Information

Observed MW

123kDa

Calculated MW

118kDa

Category

Primary antibody

Applications

WB,IHC-P,IP,ELISA

Cross-Reactivity

Human, Mouse, Rat

Background

Enables ATP binding activity and RNA helicase activity. Involved in RNA catabolic process; cellular response to DNA damage stimulus; and maturation of 5.8S rRNA. Located in nucleoplasm. Part of TRAMP complex and catalytic step 2 spliceosome. Colocalizes with nuclear exosome (RNase complex). Biomarker of amyotrophic lateral sclerosis.

Recommended Dilutions

WB 1:500 - 1:2000

IHC-P 1:50 - 1:200

IP 0.5µg-4µg antibody for
200µg-400µg extracts of
whole cells

ELISA Recommended starting
concentration is 1 µg/mL.
Please optimize the
concentration based on
your specific assay
requirements.

Immunogen Information

Gene ID

23517

Swiss Prot

P42285

Immunogen

Recombinant protein (or fragment). This information is considered to be commercially sensitive.

Synonyms

Dob1; Mtr4; SKIV2L2; fSAP118; KIAA0052

Contact

☎ | 400-999-6126

✉ | cn.market@abclonal.com.cn

🌐 | www.abclonal.com.cn

Product Information

Source

Rabbit

Isotype

IgG

Purification

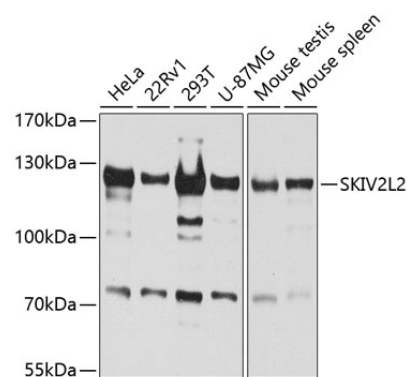
Affinity purification

Storage

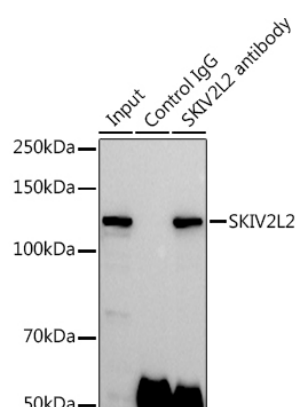
Store at -20°C. Avoid freeze / thaw cycles.

Buffer: PBS with 0.02% sodium azide, 50% glycerol, pH7.3.

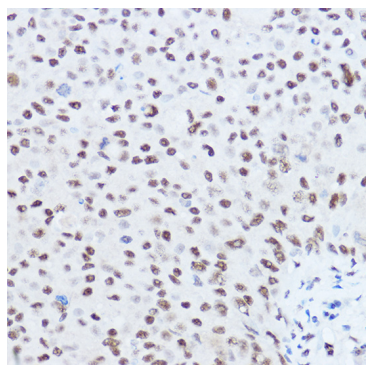
Validation Data



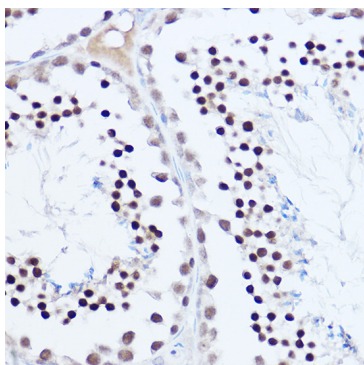
Western blot analysis of various lysates using SKIV2L2 Rabbit pAb (A5576) at 1:1000 dilution. Secondary antibody: HRP-conjugated Goat anti-Rabbit IgG (H+L) (AS014) at 1:10000 dilution. Lysates/proteins: 25µg per lane. Blocking buffer: 3% nonfat dry milk in TBST. Detection: ECL Basic Kit (RM00020). Exposure time: 60s.



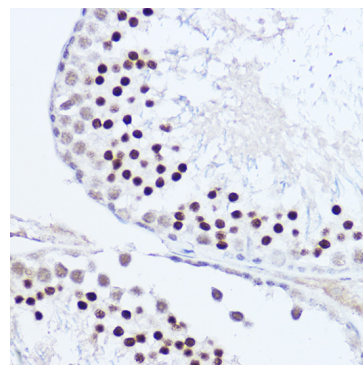
Immunoprecipitation analysis of 300 µg extracts of 293T cells using 3 µg SKIV2L2 antibody (A5576). Western blot was performed from the immunoprecipitate using SKIV2L2 antibody (A5576) at a dilution of 1:500.



Immunohistochemistry analysis of paraffin-embedded Human breast cancer using SKIV2L2 Rabbit pAb (A5576) at dilution of 1:50 (40x lens). High pressure antigen retrieval performed with 0.01M Citrate buffer (pH 6.0) prior to IHC staining.



Immunohistochemistry analysis of paraffin-embedded Mouse testis using SKIV2L2 Rabbit pAb (A5576) at dilution of 1:50 (40x lens). High pressure antigen retrieval performed with 0.01M Citrate buffer (pH 6.0) prior to IHC staining.



Immunohistochemistry analysis of paraffin-embedded Rat testis using SKIV2L2 Rabbit pAb (A5576) at dilution of 1:50 (40x lens). High pressure antigen retrieval performed with 0.01M Citrate buffer (pH 6.0) prior to IHC staining.