

# JunD Rabbit mAb

Catalog No.: A5433

Recombinant

3 Publications

## Basic Information

### Observed MW

38 kDa/42 kDa

### Calculated MW

35 kDa

### Category

Primary antibody

### Applications

WB,ChIP,CUT&Tag,ELISA

### Cross-Reactivity

Human

### CloneNo number

ARC1408

## Background

The protein encoded by this intronless gene is a member of the JUN family, and a functional component of the AP1 transcription factor complex. This protein has been proposed to protect cells from p53-dependent senescence and apoptosis. Alternative translation initiation site usage results in the production of different isoforms (PMID:12105216).

## Recommended Dilutions

**WB** 1:1000 - 1:6000

**ChIP** 5µg antibody for  
10µg-15µg of Chromatin

**CUT&Tag** 10<sup>5</sup> cells /1 µg

**ELISA** Recommended starting  
concentration is 1 µg/mL.  
Please optimize the  
concentration based on  
your specific assay  
requirements.

## Contact

☎ | 400-999-6126

✉ | [cn.market@abclonal.com.cn](mailto:cn.market@abclonal.com.cn)

🌐 | [www.abclonal.com.cn](http://www.abclonal.com.cn)

## Immunogen Information

### Gene ID

3727

### Swiss Prot

P17535

### Immunogen

Synthetic peptide. This information is considered to be commercially sensitive.

### Synonyms

AP-1; JunD

## Product Information

### Source

Rabbit

### Isotype

IgG

### Purification

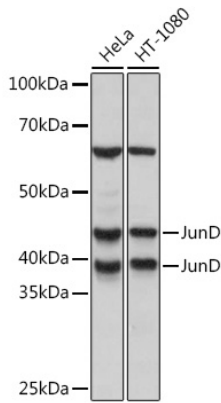
Affinity purification

### Storage

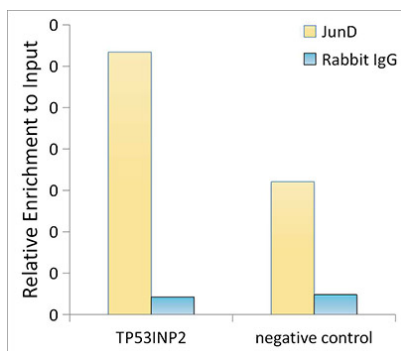
Store at -20°C. Avoid freeze / thaw cycles.

Buffer: PBS containing 50% glycerol and 0.05% BSA, preserved with proclin300 or sodium azide (as specified on the Certificate of Analysis), pH 7.3.

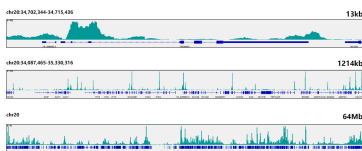
## Validation Data



Western blot analysis of various lysates using JunD Rabbit mAb (A5433) at 1:1000 dilution. Secondary antibody: HRP-conjugated Goat anti-Rabbit IgG (H+L) (AS014) at 1:10000 dilution. Lysates/proteins: 25µg per lane. Blocking buffer: 3% nonfat dry milk in TBST. Detection: ECL Basic Kit (RM00020). Exposure time: 3s.



Chromatin immunoprecipitation analysis of extracts of HepG2 cells, using JunD antibody (A5433) and rabbit IgG. The amount of immunoprecipitated DNA was checked by quantitative PCR. Histogram was constructed by the ratios of the immunoprecipitated DNA to the input.



CUT&Tag was performed using the CUT&Tag Assay Kit (pAG-Tn5) for Illumina(RK20265) from  $10^5$  Hep G2 cells with 1 µg JunD Rabbit mAb (A5433), along with a Goat Anti-Rabbit IgG(H+L). The CUT&Tag results indicate the enrichment pattern of JunD in representative gene loci (TP53INP2), as shown in figure.