

BACH1 Rabbit pAb

Catalog No.: A5393

9 Publications

Basic Information

Observed MW

100-110kDa

Calculated MW

82kDa

Category

Primary antibody

Applications

WB,IP,ELISA

Cross-Reactivity

Human,Mouse

Background

This gene encodes a transcription factor that belongs to the cap'n'collar type of basic region leucine zipper factor family (CNC-bZip). The encoded protein contains broad complex, tramtrack, bric-a-brac/poxvirus and zinc finger (BTB/POZ) domains, which is atypical of CNC-bZip family members. These BTB/POZ domains facilitate protein-protein interactions and formation of homo- and/or hetero-oligomers. When this encoded protein forms a heterodimer with MafK, it functions as a repressor of Maf recognition element (MARE) and transcription is repressed. Multiple alternatively spliced transcript variants have been identified for this gene.

Recommended Dilutions

WB 1:1000 - 1:5000**IP** 0.5µg-4µg antibody for
200µg-400µg extracts of
whole cells**ELISA** Recommended starting
concentration is 1 µg/mL.
Please optimize the
concentration based on
your specific assay
requirements.

Immunogen Information

Gene ID

571

Swiss Prot

O14867

Immunogen

Recombinant protein (or fragment). This information is considered to be commercially sensitive.

Synonyms

BACH-1; BTBD24; BACH1

Contact

 | 400-999-6126 | cn.market@abclonal.com.cn | www.abclonal.com.cn

Product Information

Source

Rabbit

Isotype

IgG

Purification

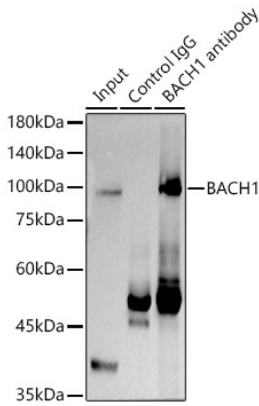
Affinity purification

Storage

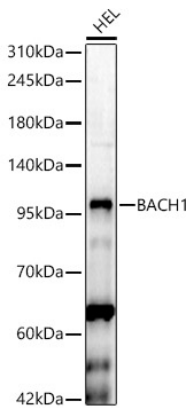
Store at -20°C. Avoid freeze / thaw cycles.

Buffer: PBS with 0.09% Sodium azide, 50% glycerol, pH7.3.

Validation Data



Immunoprecipitation analysis of 300 µg extracts of K-562 cells using 3 µg BACH1 antibody (A5393). Western blot was performed from the immunoprecipitate using BACH1 antibody (A5393) at a dilution of 1:600.



Western blot analysis of lysates from HEL cells, using BACH1 Rabbit pAb (A5393) at 1:2000 dilution. Secondary antibody: HRP-conjugated Goat anti-Rabbit IgG (H+L) (A5014) at 1:10000 dilution. Lysates/proteins: 25µg per lane. Blocking buffer: 3% nonfat dry milk in TBST. Detection: ECL Basic Kit (RM00020). Exposure time: 60s.