

APT_X Rabbit pAb

Catalog No.: A5364

Basic Information

Observed MW

40kDa

Calculated MW

41kDa

Category

Primary antibody

Applications

WB,IF/ICC,IP,ELISA

Cross-Reactivity

Human

Background

This gene encodes a member of the histidine triad (HIT) superfamily. The encoded protein may play a role in single-stranded DNA repair through its nucleotide-binding activity and its diadenosine polyphosphate hydrolase activity. Mutations in this gene have been associated with ataxia-ocular apraxia. Alternatively spliced transcript variants have been identified for this gene.

Recommended Dilutions

WB 1:500 - 1:2000

IF/ICC 1:50 - 1:100

IP 0.5μg-4μg antibody for
200μg-400μg extracts of
whole cells

ELISA Recommended starting
concentration is 1 μg/mL.
Please optimize the
concentration based on
your specific assay
requirements.

Immunogen Information

Gene ID

54840

Swiss Prot

Q7Z2E3

Immunogen

Recombinant protein (or fragment). This information is considered to be commercially sensitive.

Synonyms

AOA; AOA1; AXA1; EAOH; EOAHA; FHA-HIT; APTX

Contact

☎ | 400-999-6126

✉ | cn.market@abclonal.com.cn

🌐 | www.abclonal.com.cn

Product Information

Source

Rabbit

Isotype

IgG

Purification

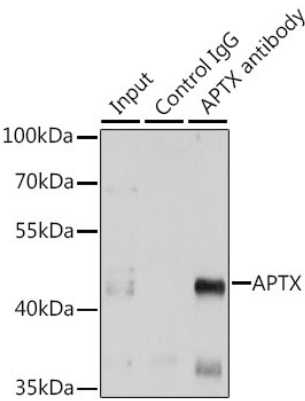
Affinity purification

Storage

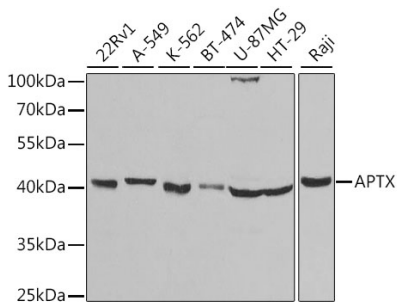
Store at -20°C. Avoid freeze / thaw cycles.

Buffer: PBS with 0.02% sodium azide, 50% glycerol, pH7.3.

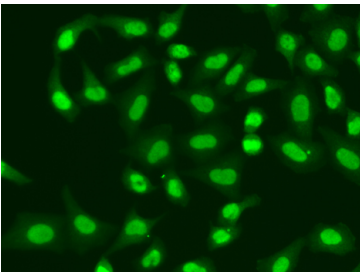
Validation Data



Immunoprecipitation analysis of 150 µg extracts of A549 cells using 3 µg APTX antibody (A5364). Western blot was performed from the immunoprecipitate using APTX antibody (A5364) at a dilution of 1:500.



Western blot analysis of various lysates using APTX Rabbit pAb (A5364) at 1:1000 dilution. Secondary antibody: HRP-conjugated Goat anti-Rabbit IgG (H+L) (AS014) at 1:10000 dilution. Lysates/proteins: 25µg per lane. Blocking buffer: 3% nonfat dry milk in TBST.



Immunofluorescence analysis of A549 cells using APTX Rabbit pAb (A5364).Secondary antibody: Cy3-conjugated Goat anti-Rabbit IgG (H+L) (AS007) at 1:500 dilution.