

RAD17 Rabbit pAb

Catalog No.: A5359

Basic Information

Observed MW

77kDa

Calculated MW

77kDa

Category

Primary antibody

Applications

WB,IP,ELISA

Cross-Reactivity

Human

Background

The protein encoded by this gene is highly similar to the gene product of *Schizosaccharomyces pombe rad17*, a cell cycle checkpoint gene required for cell cycle arrest and DNA damage repair in response to DNA damage. This protein shares strong similarity with DNA replication factor C (RFC), and can form a complex with RFCs. This protein binds to chromatin prior to DNA damage and is phosphorylated by the checkpoint kinase ATR following damage. This protein recruits the RAD1-RAD9-HUS1 checkpoint protein complex onto chromatin after DNA damage, which may be required for its phosphorylation. The phosphorylation of this protein is required for the DNA-damage-induced cell cycle G2 arrest, and is thought to be a critical early event during checkpoint signaling in DNA-damaged cells. Multiple alternatively spliced transcript variants of this gene, which encode four distinct protein isoforms, have been reported. Two pseudogenes, located on chromosomes 7 and 13, have been identified.

Recommended Dilutions

WB 1:500 - 1:2000**IP** 0.5µg-4µg antibody for
200µg-400µg extracts of
whole cells**ELISA** Recommended starting
concentration is 1 µg/mL.
Please optimize the
concentration based on
your specific assay
requirements.

Immunogen Information

Gene ID

5884

Swiss Prot

O75943

Immunogen

Recombinant protein (or fragment). This information is considered to be commercially sensitive.

Synonyms

CCYC; R24L; RAD24; HRAD17; RAD17SP; RAD17

Contact

 | 400-999-6126 | cn.market@abclonal.com.cn | www.abclonal.com.cn

Product Information

Source

Rabbit

Isotype

IgG

Purification

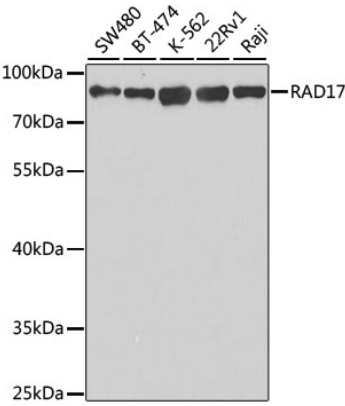
Affinity purification

Storage

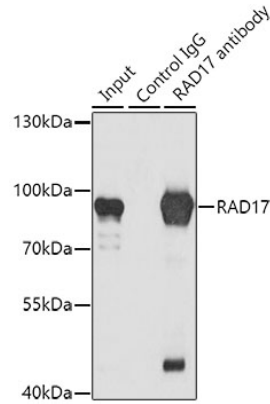
Store at -20°C. Avoid freeze / thaw cycles.

Buffer: PBS with 0.02% sodium azide, 50% glycerol, pH 7.3.

Validation Data



Western blot analysis of various lysates using RAD17 Rabbit pAb (A5359) at 1:1000 dilution. Secondary antibody: HRP-conjugated Goat anti-Rabbit IgG (H+L) (AS014) at 1:10000 dilution. Lysates/proteins: 25µg per lane. Blocking buffer: 3% nonfat dry milk in TBST. Detection: ECL Basic Kit (RM00020). Exposure time: 3s.



Immunoprecipitation analysis of 200 µg extracts of K562 cells using 1 µg RAD17 antibody (A5359). Western blot was performed from the immunoprecipitate using RAD17 antibody (A5359) at a dilution of 1:1000.