

# GM130 Rabbit pAb

Catalog No.: A5344

17 Publications

## Basic Information

**Observed MW**

130kDa

**Calculated MW**

113kDa

**Category**

Primary antibody

**Applications**

ELISA, WB, IHC-P, IF/ICC

**Cross-Reactivity**

Human, Mouse, Rat

## Background

The Golgi apparatus, which participates in glycosylation and transport of proteins and lipids in the secretory pathway, consists of a series of stacked cisternae (flattened membrane sacs). Interactions between the Golgi and microtubules are thought to be important for the reorganization of the Golgi after it fragments during mitosis. This gene encodes one of the golgins, a family of proteins localized to the Golgi. This encoded protein has been postulated to play roles in the stacking of Golgi cisternae and in vesicular transport. Several alternatively spliced transcript variants of this gene have been described, but the full-length nature of these variants has not been determined.

## Recommended Dilutions

<b>WB</b>	1:1000 - 1:5000
<b>IHC-P</b>	1:50 - 1:200
<b>IF/ICC</b>	1:100 - 1:500

## Immunogen Information

**Gene ID**

2801

**Swiss Prot**

Q08379

**Immunogen**

Recombinant fusion protein containing a sequence corresponding to amino acids 20-300 of human GM130 (NP\_004477.3).

**Synonyms**

GM130; DEDHMB

## Contact

	400-999-6126
	<a href="mailto:cn.market@abclonal.com.cn">cn.market@abclonal.com.cn</a>
	<a href="http://www.abclonal.com.cn">www.abclonal.com.cn</a>

## Product Information

**Source**

Rabbit

**Isotype**

IgG

**Purification**

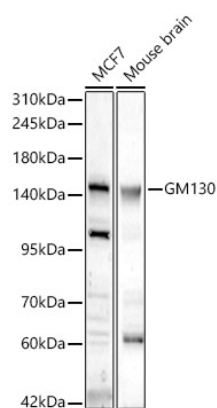
Affinity purification

**Storage**

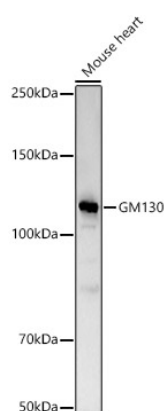
Store at -20°C. Avoid freeze / thaw cycles.

Buffer: PBS with 0.05% proclin300, 50% glycerol, pH7.3.

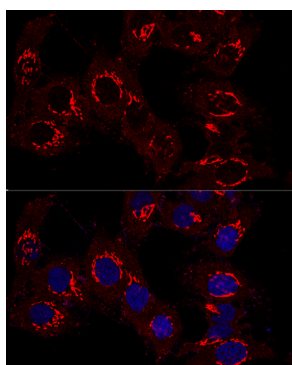
## Validation Data



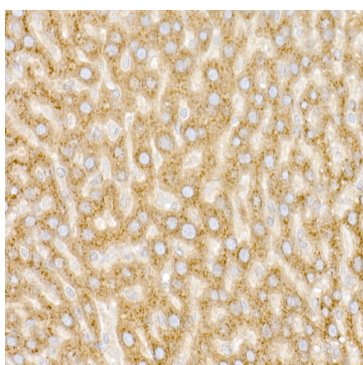
Western blot analysis of various lysates, using GM130 Rabbit pAb (A5344) at 1:700 dilution.  
Secondary antibody: HRP Goat Anti-Rabbit IgG (H+L) (A5014) at 1:10000 dilution.  
Lysates/proteins: 25ug per lane.  
Blocking buffer: 3% nonfat dry milk in TBST.  
Detection: ECL Basic Kit (RM00020).  
Exposure time: 60s.



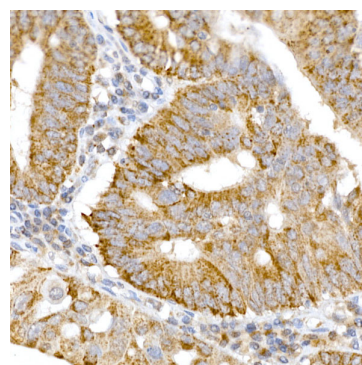
Western blot analysis of lysates from Mouse heart, using GM130 Rabbit pAb (A5344) at 1:2000 dilution.  
Secondary antibody: HRP Goat Anti-Rabbit IgG (H+L) (A5014) at 1:10000 dilution.  
Lysates/proteins: 25µg per lane.  
Blocking buffer: 3% nonfat dry milk in TBST.  
Detection: ECL Basic Kit (RM00020).  
Exposure time: 60s.



Confocal immunofluorescence analysis of HeLa cells using GM130 Rabbit pAb (A5344) at dilution of 1:400. Blue: DAPI for nuclear staining.



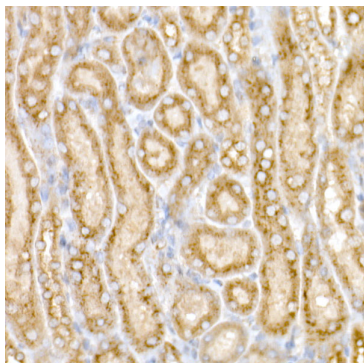
Immunohistochemistry analysis of paraffin-embedded Rat liver using GM130 Rabbit pAb (A5344) at dilution of 1:20 (40x lens). Perform high pressure antigen retrieval with 10 mM citrate buffer pH 6.0 before commencing with IHC staining protocol.



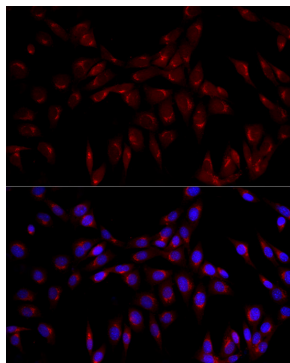
Immunohistochemistry analysis of paraffin-embedded Human colon carcinoma using GM130 Rabbit pAb (A5344) at dilution of 1:20 (40x lens). Perform high pressure antigen retrieval with 10 mM citrate buffer pH 6.0 before commencing with IHC staining protocol.

## Validation Data

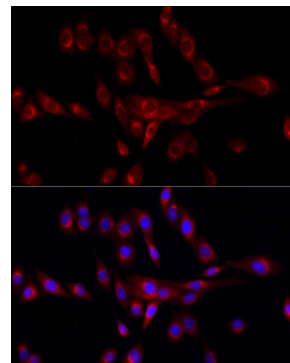
---



Immunohistochemistry analysis of paraffin-embedded Mouse kidney using GM130 Rabbit pAb (A5344) at dilution of 1:20 (40x lens). Perform high pressure antigen retrieval with 10 mM citrate buffer pH 6.0 before commencing with IHC staining protocol.



Immunofluorescence analysis of NIH/3T3 cells using GM130 Rabbit pAb (A5344) at dilution of 1:100 (40x lens). Secondary antibody: Cy3 Goat Anti-Rabbit IgG (H+L) (AS007) at 1:500 dilution. Blue: DAPI for nuclear staining.



Immunofluorescence analysis of PC-12 cells using GM130 Rabbit pAb (A5344) at dilution of 1:100 (40x lens). Secondary antibody: Cy3 Goat Anti-Rabbit IgG (H+L) (AS007) at 1:500 dilution. Blue: DAPI for nuclear staining.