

SERPINE2 Rabbit pAb

Catalog No.: A5329 **1 Publications**

Basic Information

Observed MW

44kDa

Calculated MW

44kDa

Category

Primary antibody

Applications

WB, ELISA

Cross-Reactivity

Mouse

Background

This gene encodes a member of the serpin family of proteins, a group of proteins that inhibit serine proteases. Thrombin, urokinase, plasmin and trypsin are among the proteases that this family member can inhibit. This gene is a susceptibility gene for chronic obstructive pulmonary disease and for emphysema. Alternative splicing results in multiple transcript variants.

Recommended Dilutions

WB 1:500 - 1:2000

ELISA Recommended starting concentration is 1 µg/mL. Please optimize the concentration based on your specific assay requirements.

Immunogen Information

Gene ID

5270

Swiss Prot

P07093

Immunogen

Recombinant protein (or fragment). This information is considered to be commercially sensitive.

Synonyms

GDN; PI7; PN1; PNI; PI-7; PN-1; GDNPF; SERPINE2

Contact

 | 400-999-6126

 | cn.market@abclonal.com.cn

 | www.abclonal.com.cn

Product Information

Source

Rabbit

Isotype

IgG

Purification

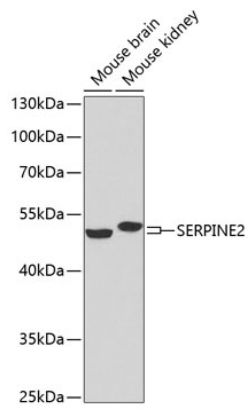
Affinity purification

Storage

Store at -20°C. Avoid freeze / thaw cycles.

Buffer: PBS containing 50% glycerol, preserved with proclin300 or sodium azide (as specified on the Certificate of Analysis), pH 7.3.

Validation Data



Western blot analysis of various lysates using SERPINE2 Rabbit pAb (A5329) at 1:1000 dilution.
Secondary antibody: HRP-conjugated Goat anti-Rabbit IgG (H+L) (AS014) at 1:10000 dilution.
Lysates/proteins: 25 μ g per lane.
Blocking buffer: 3% nonfat dry milk in TBST.