

# eIF4A1 Rabbit pAb

Catalog No.: A5294

6 Publications

## Basic Information

### Observed MW

48kDa

### Calculated MW

46kDa

### Category

Primary antibody

### Applications

WB, IF/ICC, IP, ELISA

### Cross-Reactivity

Human, Mouse, Rat

## Background

Enables double-stranded RNA binding activity. Predicted to be involved in cytoplasmic translational initiation. Located in cytoplasm.

## Recommended Dilutions

**WB** 1:1000 - 1:5000

**IF/ICC** 1:50 - 1:200

**IP** 0.5µg-4µg antibody for  
200µg-400µg extracts of  
whole cells

**ELISA** Recommended starting  
concentration is 1 µg/mL.  
Please optimize the  
concentration based on  
your specific assay  
requirements.

## Immunogen Information

### Gene ID

1973

### Swiss Prot

P60842

### Immunogen

Synthetic peptide. This information is considered to be commercially sensitive.

### Synonyms

DDX2A; EIF4A; EIF-4A; eIF4A-I; eIF-4A-I; eIF4A1

## Contact

☎ | 400-999-6126

✉ | [cn.market@abclonal.com.cn](mailto:cn.market@abclonal.com.cn)

🌐 | [www.abclonal.com.cn](http://www.abclonal.com.cn)

## Product Information

### Source

Rabbit

### Isotype

IgG

### Purification

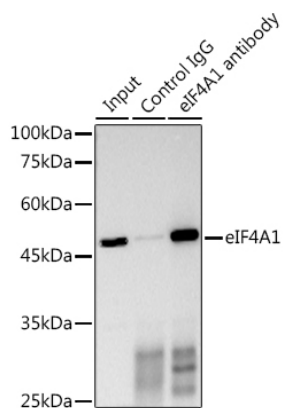
Affinity purification

### Storage

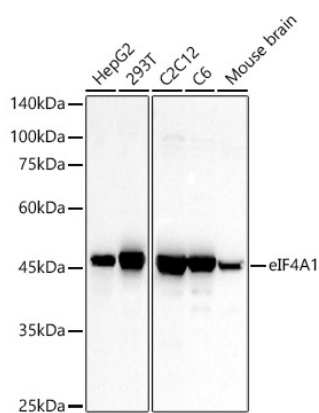
Store at -20°C. Avoid freeze / thaw cycles.

Buffer: PBS containing 50% glycerol, preserved with proclin300 or sodium azide (as specified on the Certificate of Analysis), pH 7.3.

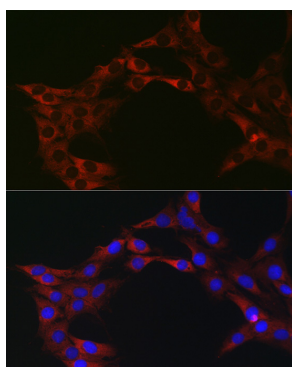
## Validation Data



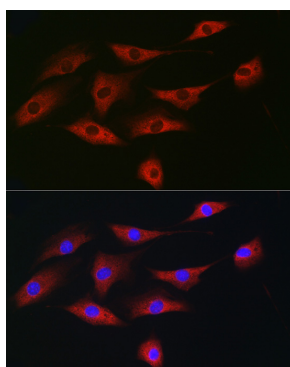
Immunoprecipitation analysis of 300 µg extracts of HeLa cells using 3 µg eIF4A1 antibody (A5294). Western blot was performed from the immunoprecipitate using eIF4A1 antibody (A5294) at a dilution of 1:1000.



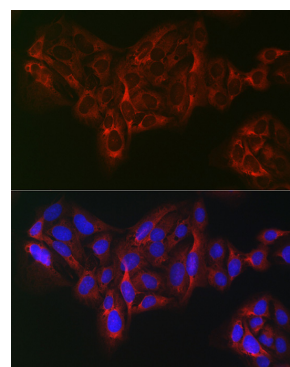
Western blot analysis of various lysates, using eIF4A1 Rabbit pAb (A5294) at 1:2000 dilution. Secondary antibody: HRP-conjugated Goat anti-Rabbit IgG (H+L) (AS014) at 1:10000 dilution. Lysates/proteins: 25µg per lane. Blocking buffer: 3% nonfat dry milk in TBST. Detection: ECL Basic Kit (RM00020). Exposure time: 30s.



Immunofluorescence analysis of C6 cells using eIF4A1 Rabbit pAb (A5294) at dilution of 1:100 (40x lens). Secondary antibody: Cy3-conjugated Goat anti-Rabbit IgG (H+L) (AS007) at 1:500 dilution. Blue: DAPI for nuclear staining.



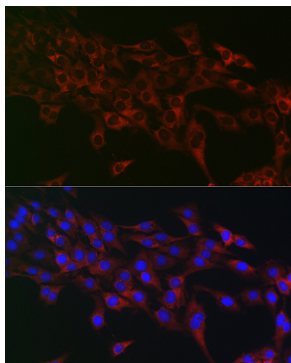
Immunofluorescence analysis of NIH/3T3 cells using eIF4A1 Rabbit pAb (A5294) at dilution of 1:100 (40x lens). Secondary antibody: Cy3-conjugated Goat anti-Rabbit IgG (H+L) (AS007) at 1:500 dilution. Blue: DAPI for nuclear staining.



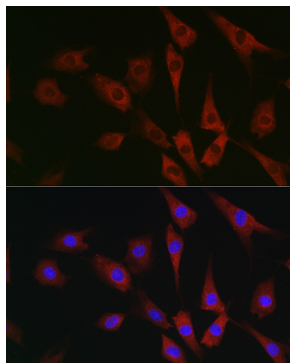
Immunofluorescence analysis of U2OS cells using eIF4A1 Rabbit pAb (A5294) at dilution of 1:100 (40x lens). Secondary antibody: Cy3-conjugated Goat anti-Rabbit IgG (H+L) (AS007) at 1:500 dilution. Blue: DAPI for nuclear staining.

## Validation Data

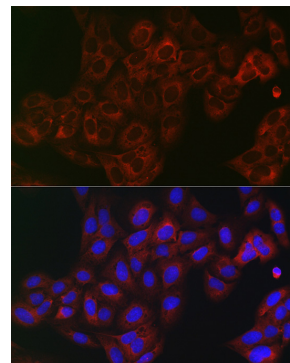
---



Immunofluorescence analysis of C6 cells using eIF4A1 Rabbit pAb (A5294) at dilution of 1:100 (40x lens). Secondary antibody: Cy3-conjugated Goat anti-Rabbit IgG (H+L) (AS007) at 1:500 dilution. Blue: DAPI for nuclear staining.



Immunofluorescence analysis of NIH/3T3 cells using eIF4A1 Rabbit pAb (A5294) at dilution of 1:100 (40x lens). Secondary antibody: Cy3-conjugated Goat anti-Rabbit IgG (H+L) (AS007) at 1:500 dilution. Blue: DAPI for nuclear staining.



Immunofluorescence analysis of U2OS cells using eIF4A1 Rabbit pAb (A5294) at dilution of 1:100 (40x lens). Secondary antibody: Cy3-conjugated Goat anti-Rabbit IgG (H+L) (AS007) at 1:500 dilution. Blue: DAPI for nuclear staining.