

LARP4 Rabbit pAb

Catalog No.: A5108 **2 Publications**

Basic Information

Observed MW

81kDa

Calculated MW

81kDa

Category

Primary antibody

Applications

WB, IF/ICC, ELISA

Cross-Reactivity

Mouse, Rat

Background

Enables mRNA 3'-UTR binding activity and poly(A) binding activity. Involved in cytoskeleton organization; positive regulation of translation; and regulation of cell morphogenesis. Located in cytosol. Colocalizes with cytoplasmic stress granule; cytosolic small ribosomal subunit; and polysome.

Recommended Dilutions

WB 1:500 - 1:1000

IF/ICC 1:50 - 1:200

ELISA Recommended starting concentration is 1 µg/mL. Please optimize the concentration based on your specific assay requirements.

Immunogen Information

Gene ID

113251

Swiss Prot

Q71RC2

Immunogen

Recombinant protein (or fragment). This information is considered to be commercially sensitive.

Synonyms

PP13296; LARP4

Contact

☎ | 400-999-6126

✉ | cn.market@abclonal.com.cn

🌐 | www.abclonal.com.cn

Product Information

Source

Rabbit

Isotype

IgG

Purification

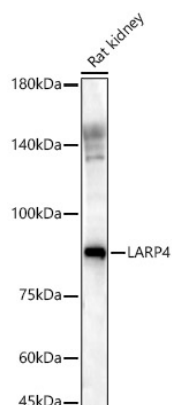
Affinity purification

Storage

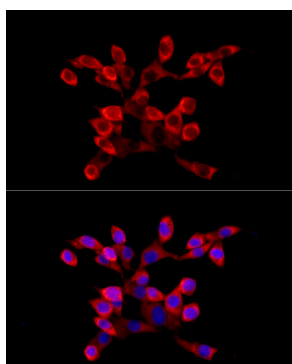
Store at -20°C. Avoid freeze / thaw cycles.

Buffer: PBS containing 50% glycerol, preserved with proclin300 or sodium azide (as specified on the Certificate of Analysis), pH 7.3.

Validation Data



Western blot analysis of lysates from Rat kidney, using LARP4 Rabbit pAb (A5108) at 1:900 dilution.
Secondary antibody: HRP-conjugated Goat anti-Rabbit IgG (H+L) (AS014) at 1:10000 dilution.
Lysates/proteins: 25µg per lane.
Blocking buffer: 3% nonfat dry milk in TBST.
Detection: ECL Basic Kit (RM00020).
Exposure time: 60s.



Immunofluorescence analysis of NIH/3T3 cells using LARP4 Rabbit pAb (A5108) at dilution of 1:100 (40x lens). Secondary antibody: Cy3-conjugated Goat anti-Rabbit IgG (H+L) (AS007) at 1:500 dilution. Blue: DAPI for nuclear staining.