

# TEAD1/2/3/4 Rabbit mAb

Catalog No.: A5092 **Recombinant**

## Basic Information

### Observed MW

53 kDa/90 kDa (Full-length protein)

### Calculated MW

48 kDa/49 kDa/47 kDa

### Category

Primary antibody

### Applications

WB, ELISA

### Cross-Reactivity

Human

### CloneNo number

ARC1158

## Background

This gene encodes a ubiquitous transcriptional enhancer factor that is a member of the TEA/ATTS domain family. This protein directs the transactivation of a wide variety of genes and, in placental cells, also acts as a transcriptional repressor. Mutations in this gene cause Sveinsson's chorioretinal atrophy. Additional transcript variants have been described but their full-length natures have not been experimentally verified.

## Recommended Dilutions

**WB** 1:1000 - 1:5000

**ELISA** Recommended starting concentration is 1 µg/mL. Please optimize the concentration based on your specific assay requirements.

## Immunogen Information

### Gene ID

7003/7004/8463/7005

### Swiss Prot

P28347/Q15561/Q15562/Q99594

### Immunogen

Recombinant protein (or fragment). This information is considered to be commercially sensitive.

### Synonyms

AA; REF1; TCF13; TEF-1; NTEF-1; TCF-13; TEAD-1

## Contact

☎ | 400-999-6126

✉ | [cn.market@abclonal.com.cn](mailto:cn.market@abclonal.com.cn)

🌐 | [www.abclonal.com.cn](http://www.abclonal.com.cn)

## Product Information

### Source

Rabbit

### Isotype

IgG

### Purification

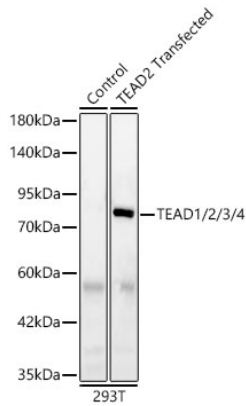
Affinity purification

### Storage

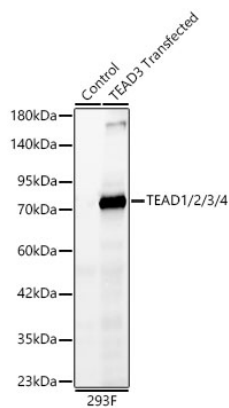
Store at -20°C. Avoid freeze / thaw cycles.

Buffer: PBS containing 50% glycerol and 0.05% BSA, preserved with proclin300 or sodium azide (as specified on the Certificate of Analysis), pH 7.3.

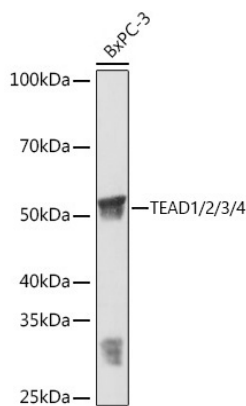
## Validation Data



Western blot analysis of lysates from wild type (WT) and 293T cells transfected with TEAD2 using TEAD1/2/3/4 Rabbit mAb(A5092) at 1:1000 dilution incubated overnight at 4°C. Secondary antibody: HRP-conjugated Goat anti-Rabbit IgG (H+L) (AS014) at 1:10000 dilution. Lysates/proteins: 25 µg per lane. Blocking buffer: 3% nonfat dry milk in TBST. Detection: ECL Basic Kit (RM00020). Exposure time: 20 s.

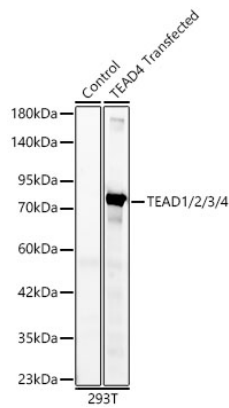


Western blot analysis of lysates from wild type (WT) and 293F cells transfected with TEAD3 using TEAD1/2/3/4 Rabbit mAb(A5092) at 1:1000 dilution incubated overnight at 4°C. Secondary antibody: HRP-conjugated Goat anti-Rabbit IgG (H+L) (AS014) at 1:10000 dilution. Lysates/proteins: 25 µg per lane. Blocking buffer: 3% nonfat dry milk in TBST. Detection: ECL Basic Kit (RM00020). Exposure time: 10 s.

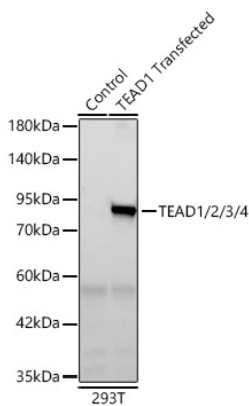


Western blot analysis of various lysates using TEAD1/2/3/4 Rabbit mAb (A5092) at 1:3000 dilution incubated overnight at 4°C. Secondary antibody: HRP-conjugated Goat anti-Rabbit IgG (H+L) (AS014) at 1:10000 dilution. Lysates/proteins: 25µg per lane. Blocking buffer: 3% nonfat dry milk in TBST. Detection: ECL Basic Kit (RM00020). Exposure time: 1 min.

## Validation Data



Western blot analysis of lysates from wild type (WT) and 293T cells transfected with TEAD4 using TEAD1/2/3/4 Rabbit mAb(A5092) at 1:1000 dilution incubated overnight at 4°C. Secondary antibody: HRP-conjugated Goat anti-Rabbit IgG (H+L) (AS014) at 1:10000 dilution. Lysates/proteins: 25 µg per lane. Blocking buffer: 3% nonfat dry milk in TBST. Detection: ECL Basic Kit (RM00020). Exposure time: 10 s.



Western blot analysis of lysates from wild type (WT) and 293T cells transfected with TEAD1 using TEAD1/2/3/4 Rabbit mAb (A5092) at 1:1000 dilution incubated overnight at 4°C. Secondary antibody: HRP-conjugated Goat anti-Rabbit IgG (H+L) (AS014) at 1:10000 dilution. Lysates/proteins: 25 µg per lane. Blocking buffer: 3% nonfat dry milk in TBST. Detection: ECL Basic Kit (RM00020). Exposure time: 10 s.