

Cullin 2 Rabbit mAb

Catalog No.: A5076 **Recombinant**

Basic Information

Observed MW

87kDa

Calculated MW

87kDa/89kDa

Category

Primary antibody

Applications

ELISA, WB, IHC-P

Cross-Reactivity

Human, Mouse, Rat

CloneNo number

ARC1248

Background

Enables ubiquitin protein ligase binding activity. Predicted to be involved in SCF-dependent proteasomal ubiquitin-dependent protein catabolic process and protein ubiquitination. Predicted to act upstream of or within protein catabolic process. Located in nucleoplasm. Part of Cul2-RING ubiquitin ligase complex.

Recommended Dilutions

WB 1:500 - 1:1000

IHC-P 1:50 - 1:200

Immunogen Information

Gene ID

8453

Swiss Prot

Q13617

Immunogen

A synthetic peptide corresponding to a sequence within amino acids 1-100 of human Cullin 2 (Q13617).

Synonyms

CUL2; cullin-2; Cullin 2

Contact

 | 400-999-6126

 | cn.market@abclonal.com.cn

 | www.abclonal.com.cn

Product Information

Source

Rabbit

Isotype

IgG

Purification

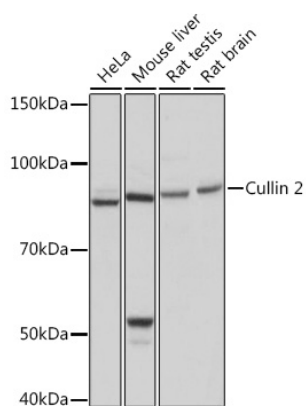
Affinity purification

Storage

Store at -20°C. Avoid freeze / thaw cycles.

Buffer: PBS with 0.02% sodium azide, 0.05% BSA, 50% glycerol, pH7.3.

Validation Data



Western blot analysis of extracts of various cell lines, using Cullin 2 Rabbit mAb (A5076) at 1:1000 dilution.

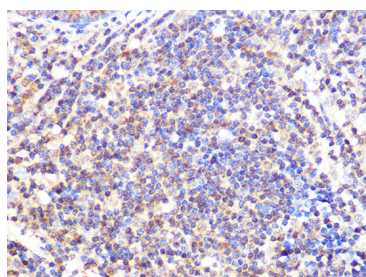
Secondary antibody: HRP Goat Anti-Rabbit IgG (H+L) (A5014) at 1:10000 dilution.

Lysates/proteins: 25µg per lane.

Blocking buffer: 3% nonfat dry milk in TBST.

Detection: ECL Basic Kit (RM00020).

Exposure time: 3s.



Immunohistochemistry analysis of paraffin-embedded human appendix using Cullin 2 Rabbit mAb (A5076) at dilution of 1:100 (40x lens). Perform microwave antigen retrieval with 10 mM PBS buffer pH 7.2 before commencing with IHC staining protocol.