

MAGT1 Rabbit pAb

Catalog No.: A5039

1 Publications

Basic Information

Observed MW

50kDa

Calculated MW

38kDa

Category

Primary antibody

Applications

WB,ELISA

Cross-Reactivity

Human

Background

This gene encodes a ubiquitously expressed magnesium cation transporter protein that localizes to the cell membrane. This protein also associates with N-oligosaccharyl transferase and therefore may have a role in N-glycosylation. Mutations in this gene cause a form of X-linked intellectual disability (XLID). This gene may have multiple in-frame translation initiation sites, one of which would encode a shorter protein with an N-terminus containing a signal peptide at amino acids 1-29.

Recommended Dilutions

WB 1:500 - 1:1000

ELISA Recommended starting concentration is 1 µg/mL. Please optimize the concentration based on your specific assay requirements.

Immunogen Information

Gene ID

84061

Swiss Prot

Q9H0U3

Immunogen

Recombinant protein (or fragment). This information is considered to be commercially sensitive.

Synonyms

IAP; XMEN; MRX95; OST3B; CDG1CC; PRO0756; SLC58A1; bA217H1.1; MAGT1

Contact

☎ | 400-999-6126

✉ | cn.market@abclonal.com.cn

🌐 | www.abclonal.com.cn

Product Information

Source

Rabbit

Isotype

IgG

Purification

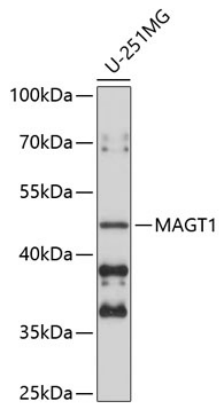
Affinity purification

Storage

Store at -20°C. Avoid freeze / thaw cycles.

Buffer: PBS containing 50% glycerol, preserved with proclin300 or sodium azide (as specified on the Certificate of Analysis), pH 7.3.

Validation Data



Western blot analysis of lysates from U-251MG cells, using MAGT1 Rabbit pAb (A5039) at 1:1000 dilution.
Secondary antibody: HRP-conjugated Goat anti-Rabbit IgG (H+L) (AS014) at 1:10000 dilution.
Lysates/proteins: 25µg per lane.
Blocking buffer: 3% nonfat dry milk in TBST.
Detection: ECL Basic Kit (RM00020).
Exposure time: 90s.