

# Hsp90 $\alpha$ Rabbit mAb

Catalog No.: A5006 **Recombinant** **9 Publications**

## Basic Information

### Observed MW

85 kDa

### Calculated MW

85 kDa

### Category

Primary antibody

### Applications

WB,IP,IF-P,ELISA

### Cross-Reactivity

Human, Mouse, Rat

### CloneNo number

ARC1167

## Background

The protein encoded by this gene is an inducible molecular chaperone that functions as a homodimer. The encoded protein aids in the proper folding of specific target proteins by use of an ATPase activity that is modulated by co-chaperones. Two transcript variants encoding different isoforms have been found for this gene.

## Recommended Dilutions

**WB** 1:1000 - 1:3000

**IP** 0.5  $\mu$ g-4  $\mu$ g antibody for  
400  $\mu$ g-600  $\mu$ g extracts  
of whole cells

**IF-P** 1:50 - 1:200

**ELISA** Recommended starting  
concentration is 1  $\mu$ g/mL.  
Please optimize the  
concentration based on  
your specific assay  
requirements.

## Contact

 | 400-999-6126

 | [cn.market@abclonal.com.cn](mailto:cn.market@abclonal.com.cn)

 | [www.abclonal.com.cn](http://www.abclonal.com.cn)

## Immunogen Information

### Gene ID

3320

### Swiss Prot

P07900

### Immunogen

Synthetic peptide. This information is considered to be commercially sensitive.

### Synonyms

EL52; HSPN; LAP2; HSP86; HSPC1; HSPCA; Hsp89; Hsp90; LAP-2; HSP89A; HSP90A; HSP90N; Hsp103; HSPCAL1; HSPCAL4; HEL-S-65p; Hsp90 $\alpha$

## Product Information

### Source

Rabbit

### Isotype

IgG

### Purification

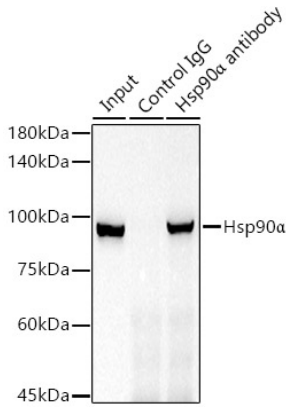
Affinity purification

### Storage

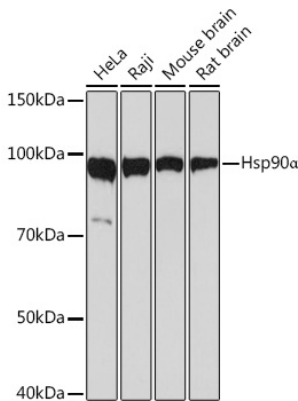
Store at -20°C. Avoid freeze / thaw cycles.

Buffer: PBS containing 50% glycerol and 0.05% BSA, preserved with proclin300 or sodium azide (as specified on the Certificate of Analysis), pH 7.3.

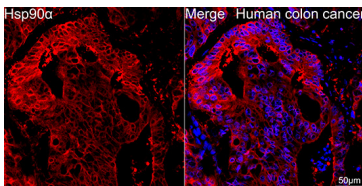
## Validation Data



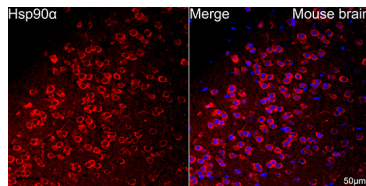
Immunoprecipitation analysis of 300 µg extracts of 293T cells using 3 µg Hsp90α antibody (A5006). Western blot was performed from the immunoprecipitate using Hsp90α antibody (A5006) at a dilution of 1:1000.



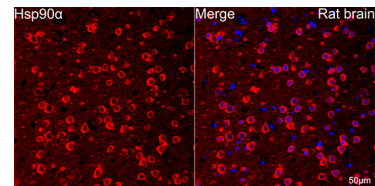
Western blot analysis of various lysates using Hsp90α Rabbit mAb (A5006) at 1:1000 dilution. Secondary antibody: HRP-conjugated Goat anti-Rabbit IgG (H+L) (AS014) at 1:10000 dilution. Lysates/proteins: 25µg per lane. Blocking buffer: 3% nonfat dry milk in TBST. Detection: ECL Basic Kit (RM00020). Exposure time: 3s.



Confocal imaging of paraffin-embedded Human colon cancer tissue using Hsp90α Rabbit mAb (A5006, dilution 1:100) followed by a further incubation with Cy3 Goat Anti-Rabbit IgG (H+L) (AS007, dilution 1:500) (Red). DAPI was used for nuclear staining (Blue). High pressure antigen retrieval performed with 0.01M Citrate Buffer (pH 6.0) prior to IF staining. Objective: 40x.



Confocal imaging of paraffin-embedded Mouse brain tissue using Hsp90α Rabbit mAb (A5006, dilution 1:100) followed by a further incubation with Cy3 Goat Anti-Rabbit IgG (H+L) (AS007, dilution 1:500) (Red). DAPI was used for nuclear staining (Blue). Microwave antigen retrieval performed with 0.01M Citrate Buffer (pH 6.0) prior to IF staining. Objective: 40x.



Confocal imaging of paraffin-embedded Rat brain tissue using Hsp90α Rabbit mAb (A5006, dilution 1:100) followed by a further incubation with Cy3 Goat Anti-Rabbit IgG (H+L) (AS007, dilution 1:500) (Red). DAPI was used for nuclear staining (Blue). Microwave antigen retrieval performed with 0.01M Citrate Buffer (pH 6.0) prior to IF staining. Objective: 40x.