

RMI1 Rabbit pAb

Catalog No.: A4991

Basic Information

Observed MW

75kDa

Calculated MW

70kDa

Category

Primary antibody

Applications

WB, ELISA

Cross-Reactivity

Human, Mouse

Background

Predicted to enable nucleotide binding activity. Predicted to be involved in double-strand break repair via homologous recombination and resolution of meiotic recombination intermediates. Predicted to act upstream of or within glucose homeostasis; reduction of food intake in response to dietary excess; and response to glucose. Located in nuclear body.

Recommended Dilutions

WB 1:200 - 1:2000

ELISA Recommended starting concentration is 1 µg/mL. Please optimize the concentration based on your specific assay requirements.

Immunogen Information

Gene ID

80010

Swiss Prot

Q9H9A7

Immunogen

Recombinant protein (or fragment). This information is considered to be commercially sensitive.

Synonyms

BLAP75; FAAP75; C9orf76; RMI1

Contact

 | 400-999-6126

 | cn.market@abclonal.com.cn

 | www.abclonal.com.cn

Product Information

Source

Rabbit

Isotype

IgG

Purification

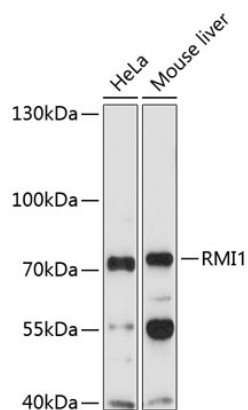
Affinity purification

Storage

Store at -20°C. Avoid freeze / thaw cycles.

Buffer: PBS with 0.02% sodium azide, 50% glycerol, pH 7.3.

Validation Data



Western blot analysis of various lysates using RMI1 Rabbit pAb (A4991) at 1:1000 dilution.
Secondary antibody: HRP-conjugated Goat anti-Rabbit IgG (H+L) (AS014) at 1:10000 dilution.
Lysates/proteins: 25µg per lane.
Blocking buffer: 3% nonfat dry milk in TBST.
Detection: ECL Enhanced Kit (RM00021).
Exposure time: 90s.