

Clathrin heavy chain Rabbit mAb

Catalog No.: A4943 **Recombinant** **3 Publications**

Basic Information

Observed MW

192kDa

Calculated MW

191kDa

Category

Primary antibody

Applications

WB, IHC-P, IF/ICC, IP, ELISA

Cross-Reactivity

Human, Mouse, Rat

CloneNo number

ARC1228

Background

Clathrin is a major protein component of the cytoplasmic face of intracellular organelles, called coated vesicles and coated pits. These specialized organelles are involved in the intracellular trafficking of receptors and endocytosis of a variety of macromolecules. The basic subunit of the clathrin coat is composed of three heavy chains and three light chains.

Recommended Dilutions

WB 1:1000 - 1:6000

IHC-P 1:200 - 1:2000

IF/ICC 1:100 - 1:400

IP 0.5µg-4µg antibody for
200µg-400µg extracts of
whole cells

ELISA Recommended starting
concentration is 1 µg/mL.
Please optimize the
concentration based on
your specific assay
requirements.

Immunogen Information

Gene ID

1213/8218

Swiss Prot

Q00610/P53675

Immunogen

Synthetic peptide. This information is considered to be commercially sensitive.

Synonyms

Hc; CHC; CHC17; MRD56; CLH-17; CLTCL2; Clathrin heavy chain

Product Information

Source

Rabbit

Isotype

IgG

Purification

Affinity purification

Storage

Store at -20°C. Avoid freeze / thaw cycles.

Buffer: PBS with 0.02% sodium azide, 0.05% BSA, 50% glycerol, pH7.3.

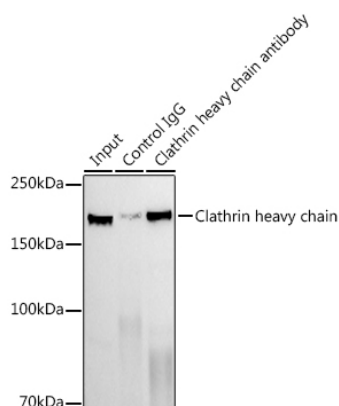
Contact

☎ | 400-999-6126

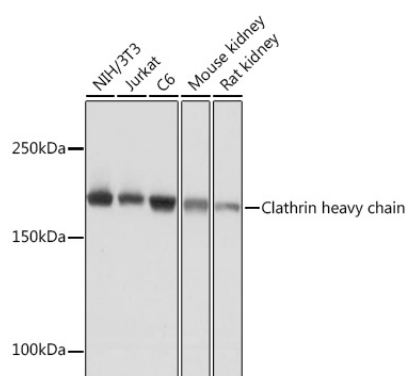
✉ | cn.market@abclonal.com.cn

🌐 | www.abclonal.com.cn

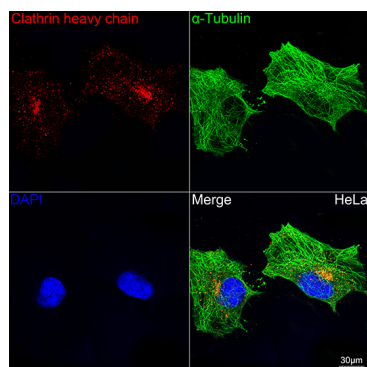
Validation Data



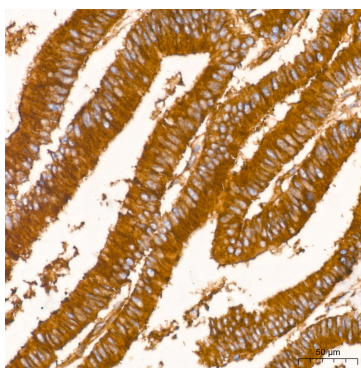
Immunoprecipitation analysis of 300 µg extracts of NIH/3T3 cells using 3 µg Clathrin heavy chain antibody (A4943). Western blot was performed from the immunoprecipitate using Clathrin heavy chain antibody (A4943) at a dilution of 1:1000.



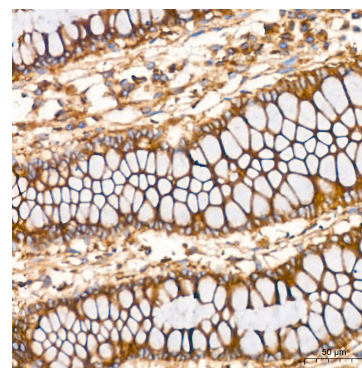
Western blot analysis of various lysates using Clathrin heavy chain Rabbit mAb (A4943) at 1:1000 dilution. Secondary antibody: HRP-conjugated Goat anti-Rabbit IgG (H+L) (AS014) at 1:10000 dilution. Lysates/proteins: 25µg per lane. Blocking buffer: 3% nonfat dry milk in TBST. Detection: ECL Basic Kit (RM00020). Exposure time: 10s.



Confocal imaging of HeLa cells using Clathrin heavy chain Rabbit mAb (A4943, dilution 1:100) (Red). The cells were counterstained with α-Tubulin Rabbit mAb (AC049, dilution 1:100) (Green). DAPI was used for nuclear staining (blue). Objective: 60x.

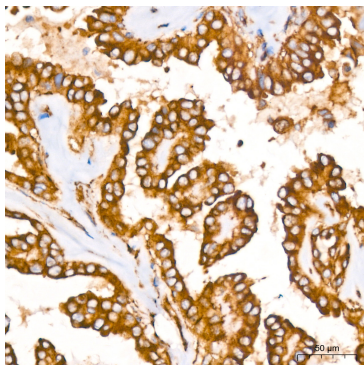


Immunohistochemistry analysis of paraffin-embedded Human colon carcinoma tissue using Clathrin heavy chain Rabbit mAb (A4943) at a dilution of 1:200 (40x lens). High pressure antigen retrieval performed with 0.01M Tris-EDTA Buffer (pH 9.0) prior to IHC staining.



Immunohistochemistry analysis of paraffin-embedded Human colon tissue using Clathrin heavy chain Rabbit mAb (A4943) at a dilution of 1:200 (40x lens). High pressure antigen retrieval performed with 0.01M Tris-EDTA Buffer (pH 9.0) prior to IHC staining.

Validation Data



Immunohistochemistry analysis of paraffin-embedded Human thyroid cancer tissue using Clathrin heavy chain Rabbit mAb (A4943) at a dilution of 1:200 (40x lens). High pressure antigen retrieval performed with 0.01M Tris-EDTA Buffer (pH 9.0) prior to IHC staining.