

CD20 Rabbit mAb

Catalog No.: A4893

Recombinant

7 Publications

Basic Information

Observed MW

25-35 kDa

Calculated MW

33 kDa

Category

Primary antibody

Applications

WB,IF/ICC,IHC-P,mIHC,FC,ELISA

Cross-Reactivity

Human

CloneNo number

ARC51683

Recommended Dilutions

WB	1:1000 - 1:4000
-----------	-----------------

IF/ICC	1:800 - 1:3200
---------------	----------------

IHC-P	1:1000 - 1:10000
--------------	------------------

mIHC	1:1000 - 1:4000
-------------	-----------------

FC	1:50 - 1:200
-----------	--------------

ELISA	Recommended starting concentration is 1 µg/mL. Please optimize the concentration based on your specific assay requirements.
--------------	---

Contact

	400-999-6126
--	--------------

	cn.market@abclonal.com.cn
--	--

Background

This gene encodes a member of the membrane-spanning 4A gene family. Members of this nascent protein family are characterized by common structural features and similar intron/exon splice boundaries and display unique expression patterns among hematopoietic cells and nonlymphoid tissues. This gene encodes a B-lymphocyte surface molecule which plays a role in the development and differentiation of B-cells into plasma cells. This family member is localized to 11q12, among a cluster of family members. Alternative splicing of this gene results in two transcript variants which encode the same protein.

Immunogen Information

Gene ID

931

Swiss Prot

P11836

Immunogen

Synthetic peptide. This information is considered to be commercially sensitive.

Synonyms

B1; S7; Bp35; CD20; FMC7; CVID5; LEU-16

Product Information

Source

Rabbit

Isotype

IgG

Purification

Affinity purification

Storage

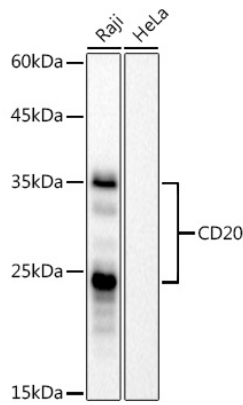
Store at -20°C. Avoid freeze / thaw cycles.

Buffer: PBS with 0.09% Sodium azide,0.05% BSA,50% glycerol,pH7.3.

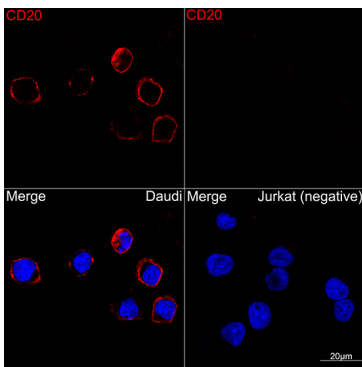


| www.abclonal.com.cn

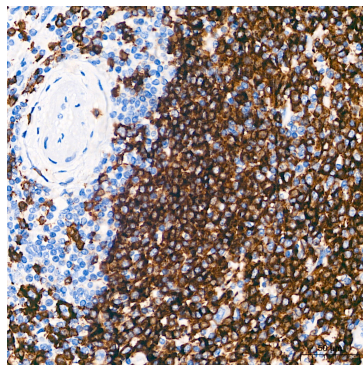
Validation Data



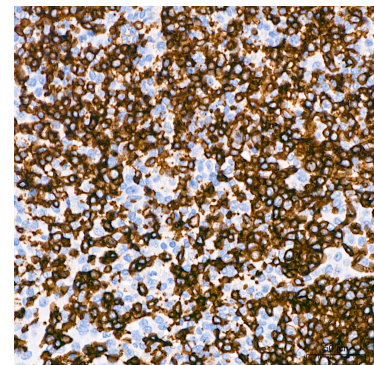
Western blot analysis of various lysates, using CD20 Rabbit mAb (A4893) at 1:1000 dilution. Secondary antibody: HRP-conjugated Goat anti-Rabbit IgG (H+L) (AS014) at 1:10000 dilution. Lysates/proteins: 25 µg per lane. Blocking buffer: 3% nonfat dry milk in TBST. Detection: ECL Basic Kit (RM00020). Negative control (NC): HeLa. Exposure time: 60 s.



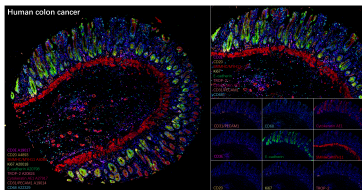
Confocal imaging of Daudi and Jurkat(Negative control) cells using CD20 Rabbit mAb (A4893,dilution 1:1000)(Red). DAPI was used for nuclear staining (blue). Objective: 100x.



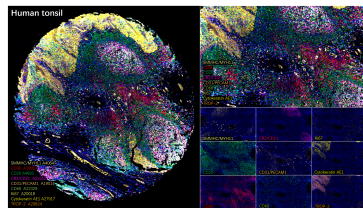
Immunohistochemistry analysis of paraffin-embedded Human spleen tissue using CD20 Rabbit mAb (A4893) at a dilution of 1:1000 (40x lens). High pressure antigen retrieval performed with 0.01M Tris-EDTA Buffer(pH 9.0) prior to IHC staining.



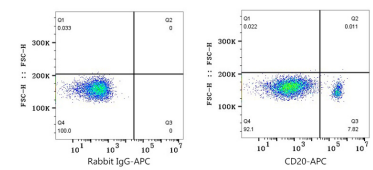
Immunohistochemistry analysis of paraffin-embedded Human tonsil tissue using CD20 Rabbit mAb (A4893) at a dilution of 1:1000 (40x lens). High pressure antigen retrieval performed with 0.01M Tris-EDTA Buffer(pH 9.0) prior to IHC staining.



The multiplex IHC analysis on paraffin-embedded Human colon cancer tissue using the following specific primary antibodies and tyramide signal amplification (TSA) reagents (RK05903) : SMMHC/MYH11 Rabbit mAb (A4064, 1:4000) with TSA-CFP490 (Red), and CD3E Rabbit mAb (A19017, 1:40000) with TSA-CFP645 (Magenta), and CD20 Rabbit mAb (A4893, 1:2000) with TSA-CFP555 (Pale Yellow), and E-Cadherin Rabbit mAb (A20798, 1:1000) with TSA-CFP555 (Green), and CD31/PECAM1 Rabbit mAb (A19014, 1:200) with TSA-CFP645 (Light Coral), and CD68 Rabbit mAb (A22329, 1:20000) with



The multiplex IHC analysis on paraffin-embedded Human tonsil tissue using the following specific primary antibodies and tyramide signal amplification (TSA) reagents (RK05903) : SMMHC/MYH11 Rabbit mAb (A4064, 1:4000) with TSA-CFP490 (Pale Yellow), and CD3E Rabbit mAb (A19017, 1:4000) with TSA-CFP645 (Red), and CD20 Rabbit mAb (A4893, 1:2000) with TSA-CFP555 (Green), and CR2/CD21 Rabbit mAb (A23512, 1:2000) with TSA-CFP645 (Magenta), and CD31/PECAM1 Rabbit mAb (A19014, 1:200) with TSA-CFP645 (Beige), and CD68 Rabbit mAb (A22329, 1:20000)



Flow cytometry: 1×10^6 Human PBMC were surface-stained with Rabbit IgG isotype control (AC042, 2 µg/mL, left) or CD20 Rabbit mAb (A4893, 2 µg/mL, right), followed by APC conjugated goat anti-rabbit pAb staining. Cells in the lymphocyte gate were used for analysis.

Validation Data

TSA-CFP490 (Cyan), and [KO Validated] Ki67 Rabbit mAb (A20018, 1:500) with TSA-CFP440 (Light Yellow), and Cytokeratin AE1 Rabbit mAb (A27917, 1:2000) with TSA-CFP440 (Magentaw), and TROP-2 Rabbit mAb (A20824, 1:10000) with TSA-CFP440 (Magenta). DAPI (Blue) was used for nuclear staining. Prior to multiplex IHC staining, high-pressure antigen retrieval was performed using 0.01M citrate buffer at pH 6.0. The analysis was completed using a 40x objective lens.

with TSA-CFP490 (Cyan), and [KO Validated] Ki67 Rabbit mAb (A20018, 1:500) with TSA-CFP440 (Light Yellow), and Cytokeratin AE1 Rabbit mAb (A27917, 1:2000) with TSA-CFP440 (Yellow), and TROP-2 Rabbit mAb (A20824, 1:10000) with TSA-CFP440 (Orange). DAPI (Blue) was used for nuclear staining. Prior to multiplex IHC staining, high-pressure antigen retrieval was performed using 0.01M citrate buffer at pH 6.0. The analysis was completed using a 40x objective lens.