

DNAJC15 Rabbit mAb

Catalog No.: A4825 **Recombinant**

Basic Information

Observed MW

18kDa

Calculated MW

16kDa

Category

Primary antibody

Applications

WB,IF/ICC,ELISA

Cross-Reactivity

Human, Mouse, Rat

CloneNo number

ARC0249

Background

Predicted to enable ATPase activator activity. Predicted to be involved in protein import into mitochondrial matrix. Predicted to act upstream of or within several processes, including cellular response to starvation; negative regulation of mitochondrial electron transport, NADH to ubiquinone; and negative regulation of protein-containing complex assembly. Predicted to be located in mitochondrial inner membrane. Predicted to be part of PAM complex, Tim23 associated import motor.

Recommended Dilutions

WB 1:1000 - 1:6000

IF/ICC 1:50 - 1:200

ELISA Recommended starting concentration is 1 µg/mL. Please optimize the concentration based on your specific assay requirements.

Immunogen Information

Gene ID

29103

Swiss Prot

Q9Y5T4

Immunogen

Synthetic peptide. This information is considered to be commercially sensitive.

Synonyms

MCJ; HSD18; DNAJD1; DNAJC15

Contact

 | 400-999-6126

 | cn.market@abclonal.com.cn

 | www.abclonal.com.cn

Product Information

Source

Rabbit

Isotype

IgG

Purification

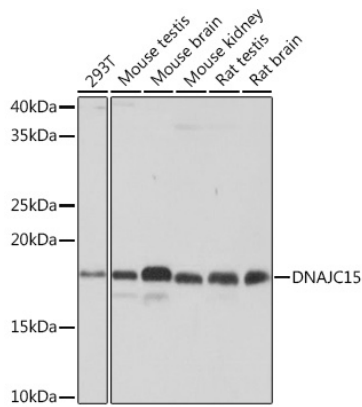
Affinity purification

Storage

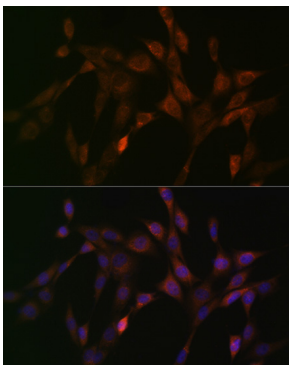
Store at -20°C. Avoid freeze / thaw cycles.

Buffer: PBS containing 50% glycerol and 0.05% BSA, preserved with proclin300 or sodium azide (as specified on the Certificate of Analysis), pH 7.3.

Validation Data



Western blot analysis of various lysates using DNAJC15 Rabbit mAb (A4825) at 1:1000 dilution. Secondary antibody: HRP-conjugated Goat anti-Rabbit IgG (H+L) (AS014) at 1:10000 dilution. Lysates/proteins: 25µg per lane. Blocking buffer: 3% nonfat dry milk in TBST. Detection: ECL Basic Kit (RM00020). Exposure time: 10s.



Immunofluorescence analysis of NIH-3T3 cells using DNAJC15 Rabbit mAb (A4825) at dilution of 1:100 (40x lens). Secondary antibody: Cy3-conjugated Goat anti-Rabbit IgG (H+L) (AS007) at 1:500 dilution. Blue: DAPI for nuclear staining.