

# KDM5A Rabbit mAb

Catalog No.: A4755

Recombinant

3 Publications

## Basic Information

**Observed MW**

200kDa

**Calculated MW**

192kDa

**Category**

Primary antibody

**Applications**

WB,IP,ChIP,ELISA

**Cross-Reactivity**

Human, Mouse

**CloneNo number**

ARC1120

## Background

This gene encodes a member of the Jumonji, AT-rich interactive domain 1 (JARID1) histone demethylase protein family. The encoded protein plays a role in gene regulation through the histone code by specifically demethylating lysine 4 of histone H3. The encoded protein interacts with many other proteins, including retinoblastoma protein, and is implicated in the transcriptional regulation of Hox genes and cytokines. This gene may play a role in tumor progression.

## Recommended Dilutions

**WB** 1:500 - 1:2000**IP** 0.5µg-4µg antibody for  
200µg-400µg extracts of  
whole cells**ChIP** 2µg antibody for  
10µg-15µg of Chromatin**ELISA** Recommended starting  
concentration is 1 µg/mL.  
Please optimize the  
concentration based on  
your specific assay  
requirements.

## Immunogen Information

**Gene ID**

5927

**Swiss Prot**

P29375

**Immunogen**

Recombinant protein (or fragment). This information is considered to be commercially sensitive.

**Synonyms**

RBP2; RBBP2; RBBP-2; KDM5A

## Product Information

**Source**

Rabbit

**Isotype**

IgG

**Purification**

Affinity purification

**Storage**

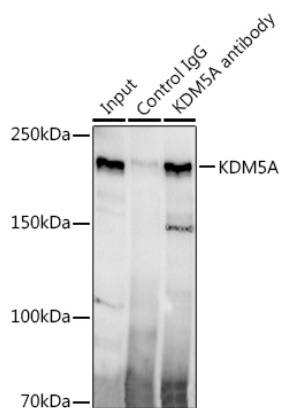
Store at -20°C. Avoid freeze / thaw cycles.

Buffer: PBS with 0.02% sodium azide, 0.05% BSA, 50% glycerol, pH7.3.

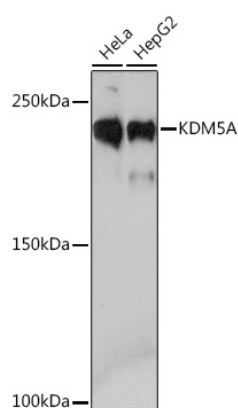
## Contact

 | 400-999-6126 | [cn.market@abclonal.com.cn](mailto:cn.market@abclonal.com.cn) | [www.abclonal.com.cn](http://www.abclonal.com.cn)

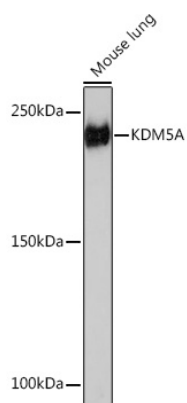
## Validation Data



Immunoprecipitation analysis of 300 µg extracts of HeLa cells using 3 µg KDM5A antibody (A4755). Western blot was performed from the immunoprecipitate using KDM5A antibody (A4755) at a dilution of 1:500.

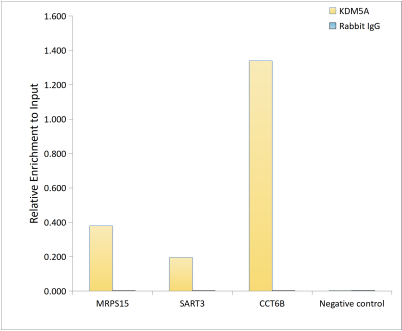


Western blot analysis of various lysates using KDM5A Rabbit mAb (A4755) at 1:1000 dilution. Secondary antibody: HRP-conjugated Goat anti-Rabbit IgG (H+L) (AS014) at 1:10000 dilution. Lysates/proteins: 25µg per lane. Blocking buffer: 3% nonfat dry milk in TBST. Detection: ECL Basic Kit (RM00020). Exposure time: 3min.



Western blot analysis of lysates from Mouse lung, using KDM5A Rabbit mAb (A4755) at 1:1000 dilution. Secondary antibody: HRP-conjugated Goat anti-Rabbit IgG (H+L) (AS014) at 1:10000 dilution. Lysates/proteins: 25µg per lane. Blocking buffer: 3% nonfat dry milk in TBST. Detection: ECL Enhanced Kit (RM00021). Exposure time: 3min.

## Validation Data



Chromatin immunoprecipitation analysis of extracts of HCT116 cells, using KDM5A antibody (A4755) and rabbit IgG. The amount of immunoprecipitated DNA was checked by quantitative PCR. Histogram was constructed by the ratios of the immunoprecipitated DNA to the input.