

p90Rsk/RSK1/RPS6KA1 Rabbit mAb

Catalog No.: A4695

Recombinant

5 Publications

Basic Information

Observed MW

83kDa

Calculated MW

83kDa

Category

Primary antibody

Applications

WB, ELISA

Cross-Reactivity

Human, Mouse

CloneNo number

ARC1096

Background

This gene encodes a member of the RSK (ribosomal S6 kinase) family of serine/threonine kinases. This kinase contains 2 nonidentical kinase catalytic domains and phosphorylates various substrates, including members of the mitogen-activated kinase (MAPK) signalling pathway. The activity of this protein has been implicated in controlling cell growth and differentiation. Alternate transcriptional splice variants, encoding different isoforms, have been characterized.

Recommended Dilutions

WB 1:500 - 1:2000

ELISA Recommended starting concentration is 1 µg/mL. Please optimize the concentration based on your specific assay requirements.

Immunogen Information

Gene ID

6195

Swiss Prot

Q15418

Immunogen

Synthetic peptide. This information is considered to be commercially sensitive.

Synonyms

RSK; HU-1; RSK1; p90Rsk; MAPKAPK1; MAPKAPK1A; p90Rsk/RSK1/RPS6KA1

Contact

☎ | 400-999-6126

✉ | cn.market@abclonal.com.cn

🌐 | www.abclonal.com.cn

Product Information

Source

Rabbit

Isotype

IgG

Purification

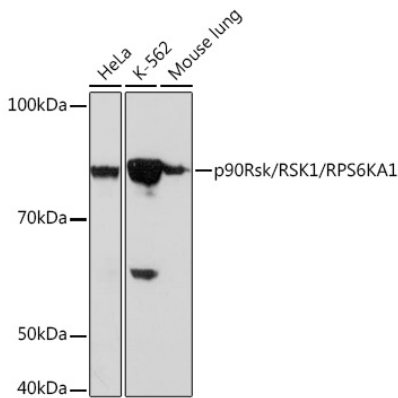
Affinity purification

Storage

Store at -20°C. Avoid freeze / thaw cycles.

Buffer: PBS with 0.02% sodium azide, 0.05% BSA, 50% glycerol, pH7.3.

Validation Data



Western blot analysis of various lysates using p90Rsk/RSK1/RPS6KA1 Rabbit mAb (A4695) at 1:1000 dilution.
Secondary antibody: HRP-conjugated Goat anti-Rabbit IgG (H+L) (AS014) at 1:10000 dilution.
Lysates/proteins: 25µg per lane.
Blocking buffer: 3% nonfat dry milk in TBST.
Detection: ECL Basic Kit (RM00020).
Exposure time: 3min.