

PODXL Rabbit mAb

Catalog No.: A4554 **Recombinant** **1 Publications**

Basic Information

Observed MW

200-400kDa

Calculated MW

59kDa

Category

Primary antibody

Applications

WB,IHC-P,ELISA

Cross-Reactivity

Human

CloneNo number

ARC1031

Background

This gene encodes a member of the sialomucin protein family. The encoded protein was originally identified as an important component of glomerular podocytes. Podocytes are highly differentiated epithelial cells with interdigitating foot processes covering the outer aspect of the glomerular basement membrane. Other biological activities of the encoded protein include: binding in a membrane protein complex with Na⁺/H⁺ exchanger regulatory factor to intracellular cytoskeletal elements, playing a role in hematopoietic cell differentiation, and being expressed in vascular endothelium cells and binding to L-selectin.

Recommended Dilutions

WB 1:1000 - 1:2000

IHC-P 1:50 - 1:200

ELISA Recommended starting concentration is 1 µg/mL. Please optimize the concentration based on your specific assay requirements.1000

Immunogen Information

Gene ID

5420

Swiss Prot

O00592

Immunogen

Recombinant protein (or fragment).This information is considered to be commercially sensitive.

Synonyms

PC; PDX; PCLP; Gp200; gp135; PCLP-1; PODXL1; PODXL

Contact

☎ | 400-999-6126

✉ | cn.market@abclonal.com.cn

🌐 | www.abclonal.com.cn

Product Information

Source

Rabbit

Isotype

IgG

Purification

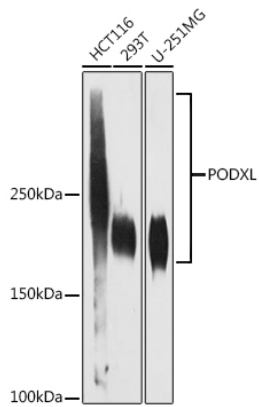
Affinity purification

Storage

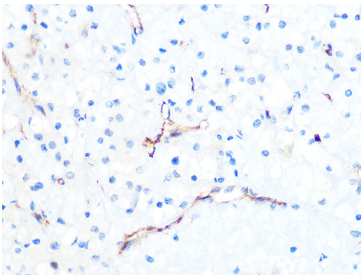
Store at -20°C. Avoid freeze / thaw cycles.

Buffer: PBS containing 50% glycerol and 0.05% BSA, preserved with proclin300 or sodium azide (as specified on the Certificate of Analysis), pH 7.3.

Validation Data



Western blot analysis of various lysates using PODXL Rabbit mAb (A4554) at 1:1000 dilution.
Secondary antibody: HRP-conjugated Goat anti-Rabbit IgG (H+L) (AS014) at 1:10000 dilution.
Lysates/proteins: 25µg per lane.
Blocking buffer: 3% nonfat dry milk in TBST.
Detection: ECL Enhanced Kit (RM00021).
Exposure time: 180s.



Immunohistochemistry analysis of paraffin-embedded Human kidney cancer using PODXL Rabbit mAb (A4554) at dilution of 1:100 (40x lens). Microwave antigen retrieval performed with 0.01M PBS Buffer (pH 7.2) prior to IHC staining.