

TUBGCP3 Rabbit pAb

Catalog No.: A4417

Basic Information

Observed MW

105kDa

Calculated MW

104kDa

Category

Primary antibody

Applications

WB, ELISA

Cross-Reactivity

Human, Mouse, Rat

Background

Enables gamma-tubulin binding activity. Predicted to be involved in meiotic cell cycle; microtubule cytoskeleton organization; and mitotic cell cycle. Located in cytoplasm and microtubule cytoskeleton.

Recommended Dilutions

WB 1:500 - 1:2000

ELISA Recommended starting concentration is 1 µg/mL. Please optimize the concentration based on your specific assay requirements.

Immunogen Information

Gene ID

10426

Swiss Prot

Q96CW5

Immunogen

Recombinant protein (or fragment). This information is considered to be commercially sensitive.

Synonyms

104p; ALP6; GCP3; Spc98; SPBC98; Spc98p; Grip104; TUBGCP3

Contact

 | 400-999-6126

 | cn.market@abclonal.com.cn

 | www.abclonal.com.cn

Product Information

Source

Rabbit

Isotype

IgG

Purification

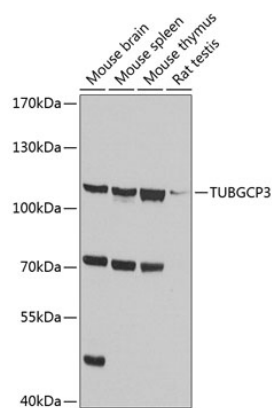
Affinity purification

Storage

Store at -20°C. Avoid freeze / thaw cycles.

Buffer: PBS containing 50% glycerol, preserved with proclin300 or sodium azide (as specified on the Certificate of Analysis), pH 7.3.

Validation Data



Western blot analysis of various lysates using TUBGCP3 Rabbit pAb (A4417) at 1:1000 dilution. Secondary antibody: HRP-conjugated Goat anti-Rabbit IgG (H+L) (AS014) at 1:10000 dilution. Lysates/proteins: 25µg per lane. Blocking buffer: 3% nonfat dry milk in TBST. Detection: ECL Basic Kit (RM00020). Exposure time: 30s.