

CD147/BSG Rabbit mAb

Catalog No.: A4310 **Recombinant**

Basic Information

Observed MW

40-60kDa

Calculated MW

19kDa/22kDa/29kDa/42kDa

Category

Primary antibody

Applications

WB, ELISA

Cross-Reactivity

Human, Mouse

CloneNo number

ARC0964

Background

The protein encoded by this gene, basigin, is a plasma membrane protein that is important in spermatogenesis, embryo implantation, neural network formation, and tumor progression. Basigin is also a member of the immunoglobulin superfamily, ubiquitously expressed in various tissues. Multiple transcript variants encoding different isoforms have been found for this gene.

Recommended Dilutions

WB 1:500 - 1:1000

ELISA Recommended starting concentration is 1 µg/mL. Please optimize the concentration based on your specific assay requirements.

Immunogen Information

Gene ID

682

Swiss Prot

P35613

Immunogen

Synthetic peptide. This information is considered to be commercially sensitive.

Synonyms

OK; 5F7; TCSF; CD147; EMPRIN; HAB18G; EMMPRIN; CD147/BSG

Contact

 | 400-999-6126

 | cn.market@abclonal.com.cn

 | www.abclonal.com.cn

Product Information

Source

Rabbit

Isotype

IgG

Purification

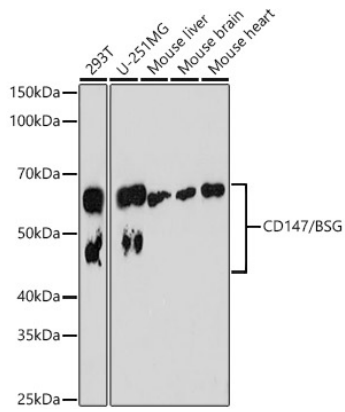
Affinity purification

Storage

Store at -20°C. Avoid freeze / thaw cycles.

Buffer: PBS containing 50% glycerol and 0.05% BSA, preserved with proclin300 or sodium azide (as specified on the Certificate of Analysis), pH 7.3.

Validation Data



Western blot analysis of various lysates, using CD147/BSG Rabbit mAb (A4310) at 1:1000 dilution.
Secondary antibody: HRP-conjugated Goat anti-Rabbit IgG (H+L) (AS014) at 1:10000 dilution.
Lysates/proteins: 25 μ g per lane.
Blocking buffer: 3% nonfat dry milk in TBST.
Detection: ECL Basic Kit (RM00020).
Exposure time: 180s.